

# BN-3646



## Instruções de Montagem Assembly Instructions Instrucciones de Armado

Acesse Vídeos de Montagens  
Access Mounting Videos  
Acceder a los Vídeos de Montaje  
[www.tecnomobili.ind.br](http://www.tecnomobili.ind.br)



Estrada RSC 453, Km s/nº | Garibaldi | RS  
CEP: 95720-000 | Fone / Fax: 54.3464.2050

[sac@moveisvideira.com.br](mailto:sac@moveisvideira.com.br)

### Notas Especiais:

**01** -Examine completamente todas as peças do móvel antes de começar o trabalho.

**02** -Recomenda-se montar o móvel conforme este Manual de Montagem.

**03** -É de responsabilidade do montador seguir as instruções do Manual de Montagem, que são fundamentais para garantir a estrutura do móvel.

**04** -Para limpeza, utilizar somente pano úmido e sabão neutro.

### Special notes:

**01** -Check all parts of the unit thoroughly before starting work.

**02** -It is recommended to assemble the furniture according to this Installation Manual.

**03** -It is the responsibility of the assembler to follow the instructions in the Assembly Manual, which are essential to ensure the structure of the furniture.

**04** -For cleaning use only damp cloth and neutral soap.

### Notas especiales:

**01** -Examine completamente todas las piezas del mueble antes de iniciar el trabajo.

**02** -Se recomienda montar el mueble conforme el Manual de Ensamblaje.

**03** -Es de responsabilidad del montador seguir las instrucciones del Manual de Ensamblaje, que son fundamentales para garantizar la estructura del mueble.

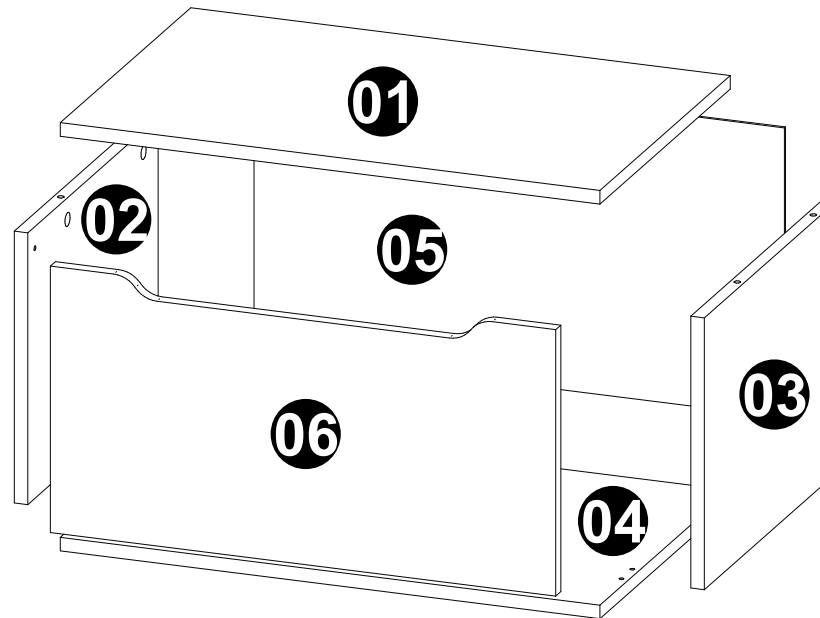
**04** -Para limpieza solamente usar trapo húmedo y jabón neutro.

### Guarante certificate:

The guarantee of products manufactured by Móveis Videira LTDA covers any defects / manufacturing defects, within the period established by the Consumer Protection Code, in its Article 26, II, which provides for a legal guarantee of ninety (90) days.



CóD	DESCRIÇÃO	DESCRIPTION	DESCRIPCIÓN	QTD	RAW MATERIAL	DIMENSION	CÓD
01	Tampo	Top	Topa	1	MDP 15mm	600x384x15mm	703606
02	Lateral Esquerda	Left Side	Lateral Izquierda	1	MDP 15mm	300x384x15mm	313646
03	Lateral Direita	Right Side	Lateral Derecha	1	MDP 15mm	300x384x15mm	303646
04	Base	Base	Base	1	MDP 15mm	600x384x15mm	103646
05	Costa	Back	Revés	1	MDP 03mm	590x320x03mm	403646
06	Porta	Door	Puerta	1	MDP 15mm	562x294x15mm	63646



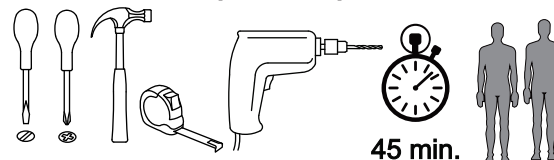
### TAMANHO REAL - TAMAÑO VERDADERO - REAL SIZE

REF	DESCRIÇÃO	QTD
A	3,5 x 14mm CC	18 3639
B	Cavilha 5 x 30mm	04 3880
C	Parafuso 5 x 50mm CF	02 2263
D	3,5x40mm CC	04 8115

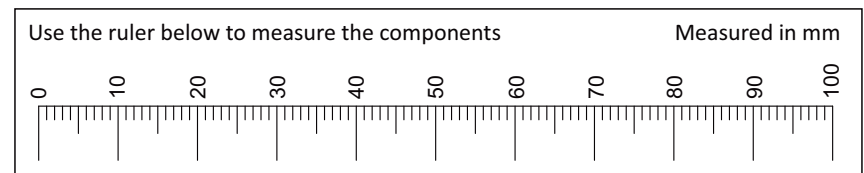
### ILUSTRAÇÃO - ILUSTRACION - ILLUSTRATION

REF	DESCRIÇÃO	QTD
E	34 x 7mm Parafuso Minifix	04 3771
F	15 x 12mm Tambor Minifix	04 9516
G	22x3mm Pregos 10 x 10mm	14 3051
H	Bucha 8mm	02 5623
I	Dobradiça Alta 26mm Calço Nº 12	02 6517
J	325 x 48 x 17mm Articulador c/ Trava Esquerdo	01
K	Cantoneira com capa 43x43x25mm	02 5630
L	14x8x5mm Suporte Prateleira 5x8 c/ estria	01 3748

### Ferramentas | Tools | Herramientas



45 min.

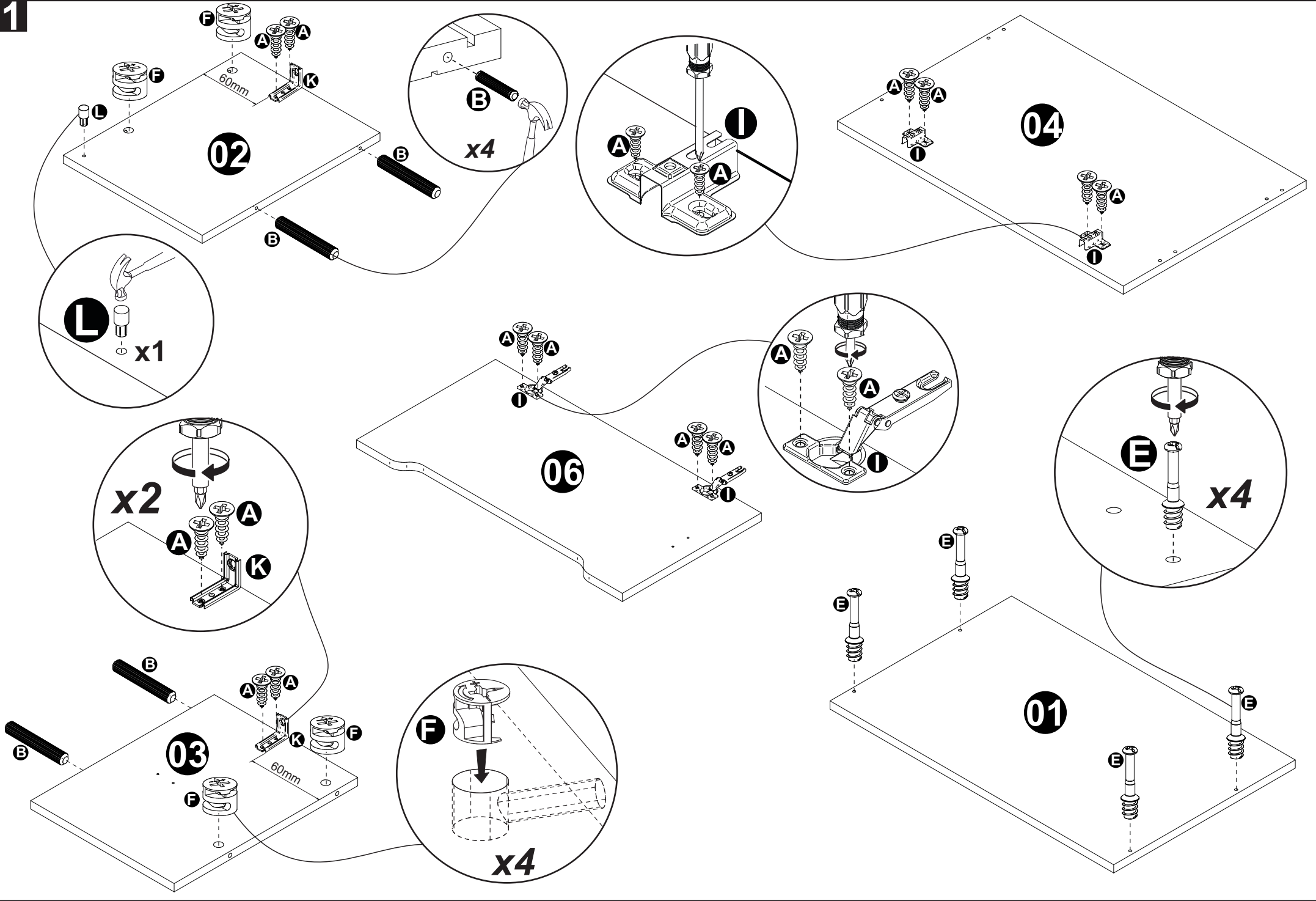


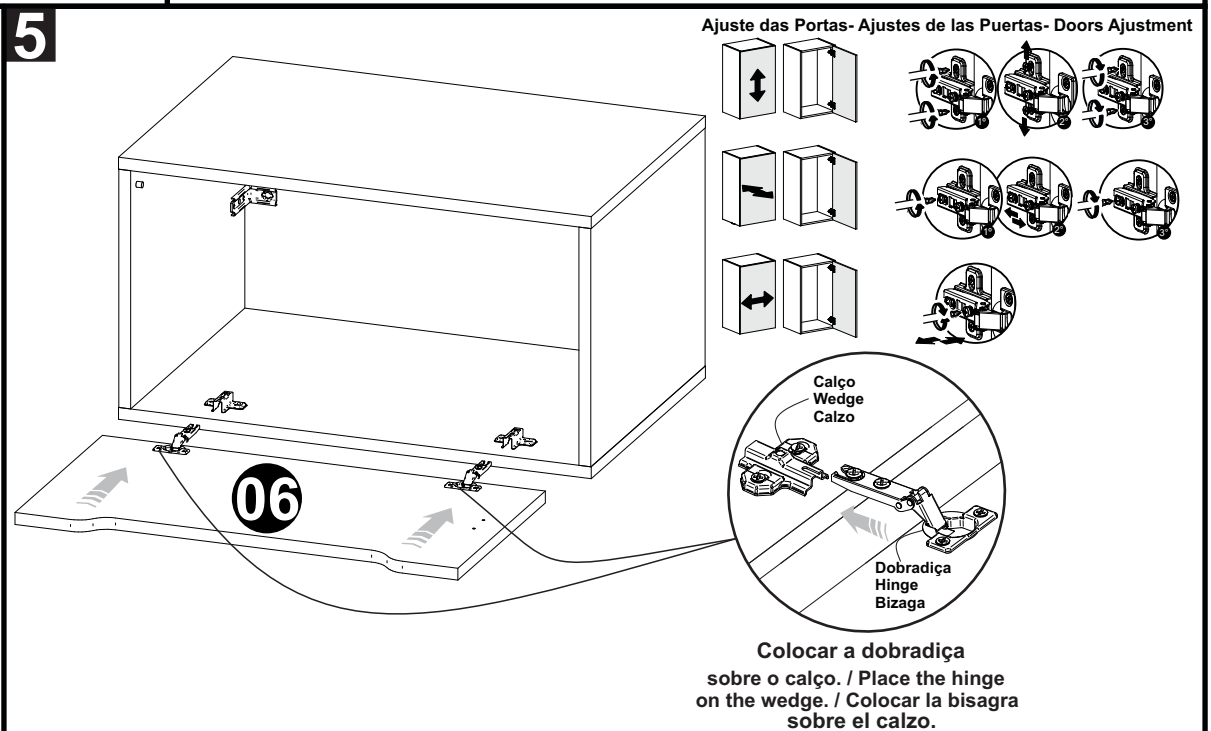
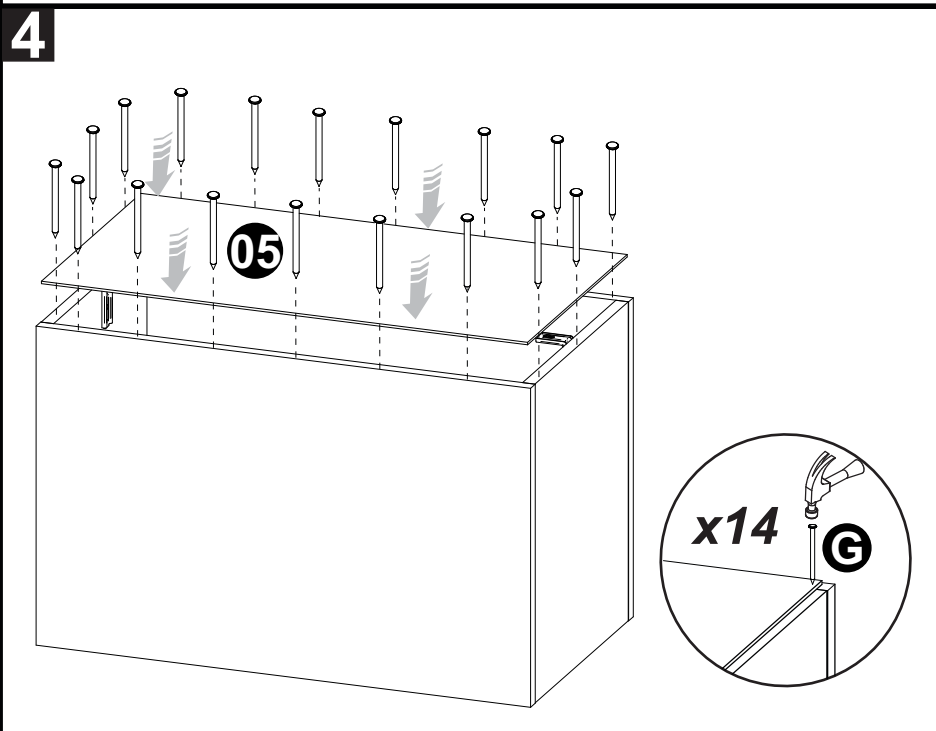
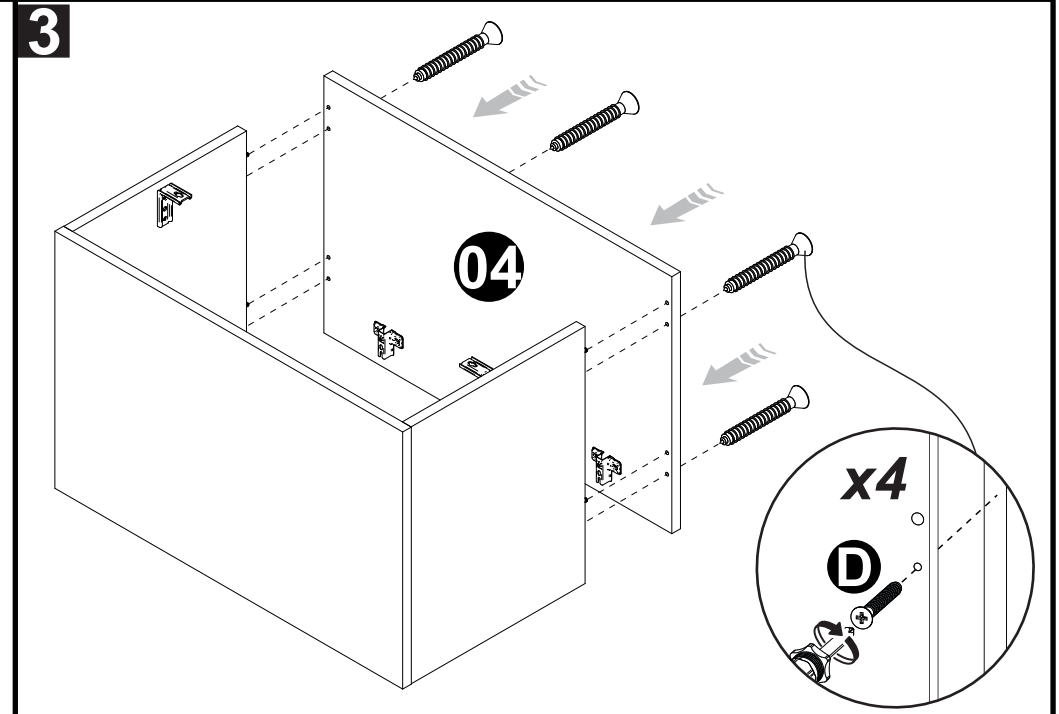
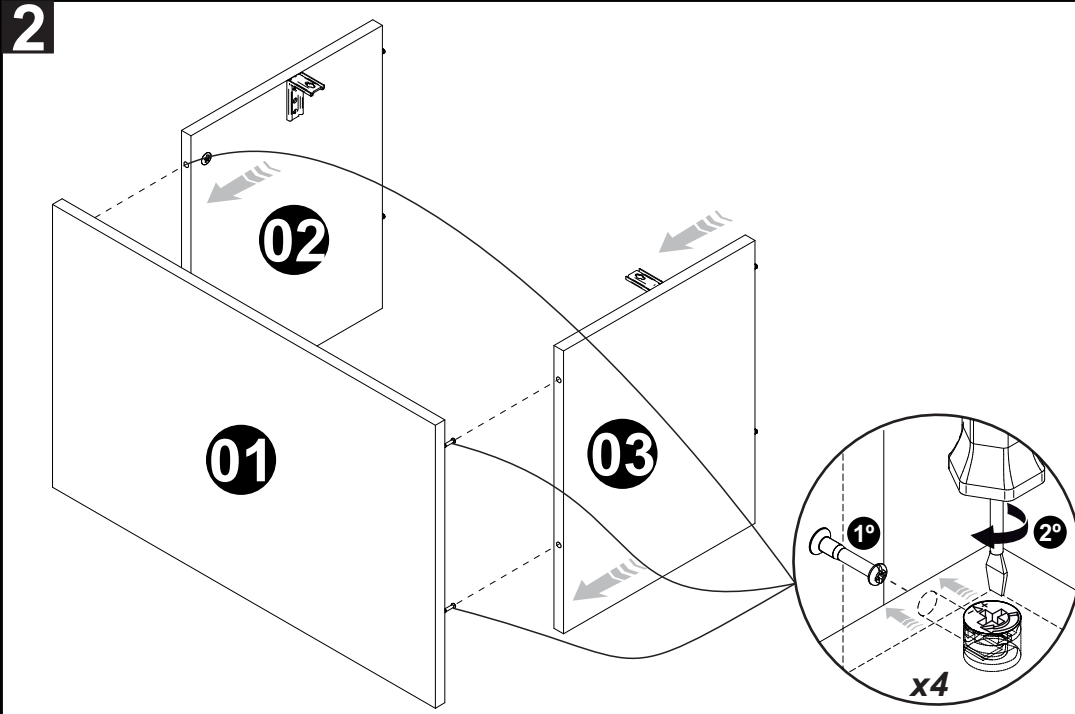
Use the ruler below to measure the components

Measured in mm

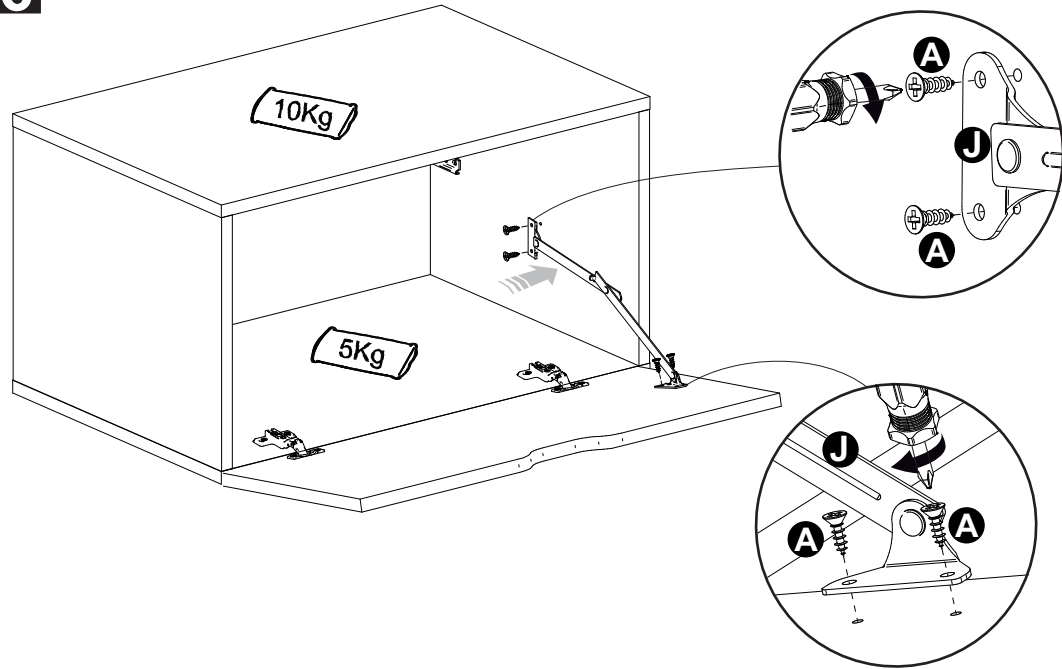
Revisão: 01  
Data: 09/01/2024

1





6



7

