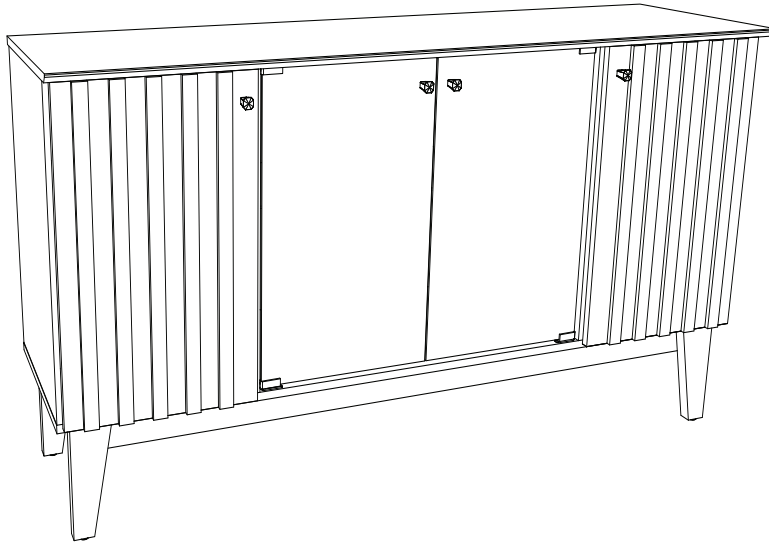
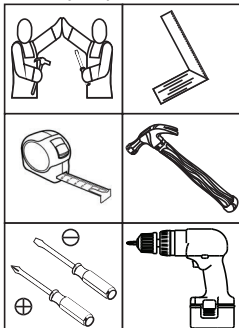


**HENN**Ind. e Com. de Móveis Henn  
Mondaiá - SC - Brasil

☎ +55 49 3674.3500

📧 @moveishenn  
www.henn.com.br**INSTRUÇÕES DE  
MONTAGEM**INSTRUCCIONES DE MONTAJE  
ASSEMBLY INSTRUCTIONS**Buffet Eiffel 4 Portas | Buffet Eiffel 4 Puertas | Eiffel Buffet 4 Doors****S352-129 Off White/Nature****Requisitos para montagem  
Requisitos para la montaje  
Assembly Requirements**

Imagens meramente ilustrativas,  
não acompanha o produto.  
Imágenes ilustrativas, no incluidas  
con el producto.  
Illustrative images, not included  
with the product.

**AVISO**

Para limpeza de seu móvel, use uma flanela seca ou umedecida, e não utilize produtos químicos que possam danificar seu produto.

**SISTEMA DE MONTAGEM**

O sistema de montagem dos produtos, funciona de acordo com a ordem crescente dos números indicados no desenho. Ex: 01, 02, 03, 04... até a conclusão da montagem.

**ASSISTÊNCIA TÉCNICA**

Para solicitação de Assistência Técnica você consumidor deverá entrar em contato com o Lojista a qual você realizou a compra deste produto e solicitar a assistência técnica das peças avariadas. A garantia abrange todas as peças, partes e componentes que eventualmente venham apresentar defeito de fabricação no prazo de 03 (três) meses, contando a partir da entrega do produto ao consumidor, mediante nota fiscal de compra. Se houver qualquer alteração na estrutura do produto ou ocorrer defeito por negligência do montador/consumidor em relação a instrução de montagem e manuseio, não será fornecido assistência técnica gratuita.

**ADVERTENCIA**

Para limpieza de su móvil, use una flanela seca o húmeda, y no utilice productos químicos que puedan dañar su producto.

**SISTEMA DE MONTAJE**

El sistema de montaje de los productos funciona de acuerdo con el orden creciente de los números indicados en el dibujo. Ej.: 01, 02, 03, 04... hasta la conclusión del montaje.

**ASISTENCIA TÉCNICA**

Para solicitar Asistencia Técnica, el consumidor debe comunicarse con el Comercio que usted realizó la compra de este producto y solicita asistencia técnica para las partes dañadas. La garantía cubre todas las partes, piezas y componentes que eventualmente puedan presentar defecto de fabricación en el plazo de 03 (tres) meses, contados a partir de la entrega del producto al consumidor, mediante factura de compra. Si se produce algún cambio en la estructura del producto o se produce un defecto por negligencia del montador/consumidor en relación con las instrucciones de montaje y manipulación, no se prestará asistencia técnica gratuita.

**NOTICE**

To clean your furniture, use a dry or wet cloth, and do not use chemicals that may damage your product.

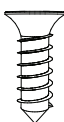
**ASSEMBLY SYSTEM**

The products' assembly system works according to the increasing order of the indicated numbers. For example: 01, 02, 03, 04 ... to the end of the assembly.

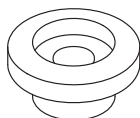
**TECHNICAL ASSISTANCE**

To request Technical Assistance, the consumer must contact the retailer from whom you purchased this product and request technical assistance for the damaged parts. The warranty covers all parts, parts and components that may eventually present a manufacturing defect within a period of 03 (three) months, counting from the delivery of the product to the consumer, by means of a purchase invoice. If there is any change in the structure of the product or defect occurs due to negligence of the assembler/consumer in relation to the assembly and handling instruction, free technical assistance will not be provided.

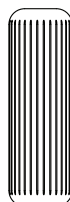
## ACESSÓRIOS | ACCESORIOS | ACCESSORIES

A **x36**B **x4**C **x20**D **x4**E **x26**

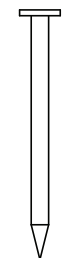
F

**x2**

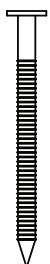
G

**x30**

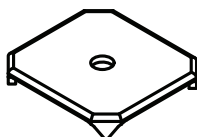
H

**x60**

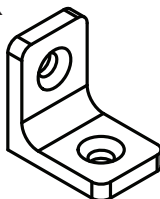
I

**x4**

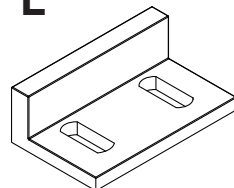
J

**x10**

K

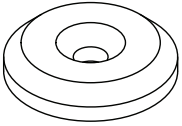
**x4**

L

**x1**Parafusos em escala  
Tornillos escalados  
Scaled screws**1:1**

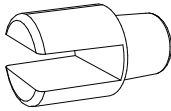
## ACESSÓRIOS | ACCESORIOS | ACCESSORIES

M



x4

N



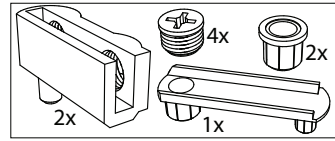
x4

O



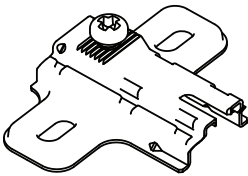
x4

P



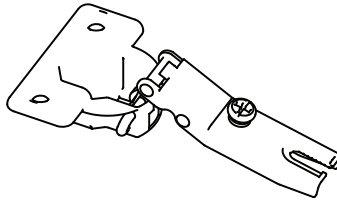
x2 Kits

Q



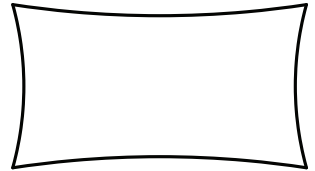
x4

R



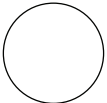
x4

S



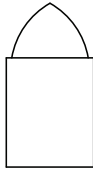
x1

T



x46

U



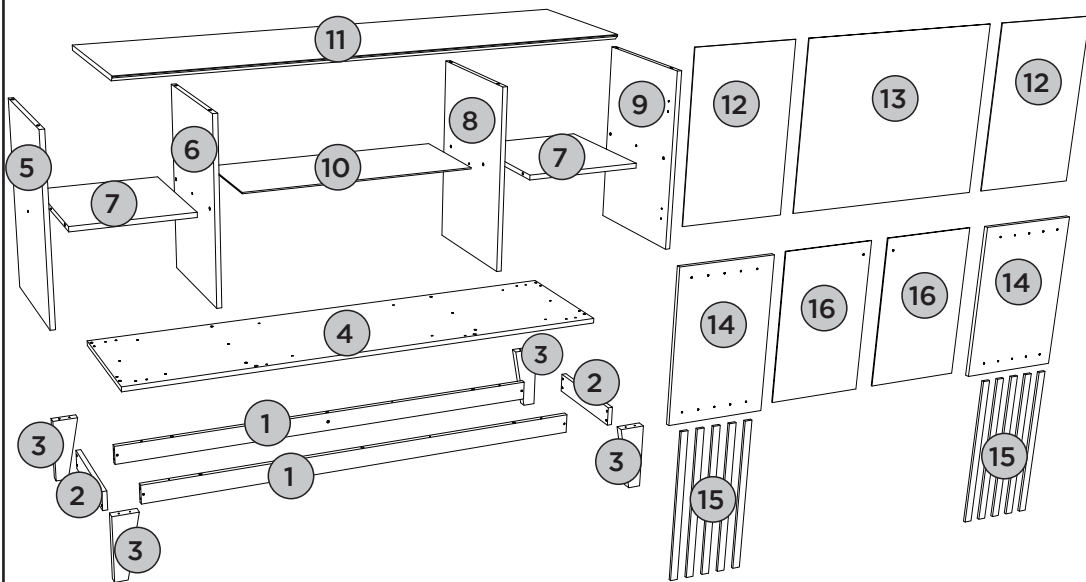
x3

V



x1

## LISTA DE PEÇAS | LISTA DE PIEZAS | LIST OF PIECES



Item	Caixa Caja Box	Qtd Ctd Qty	Descrição Descripción Description	Dimensões (mm)   Dimensiones (mm)   Dimensions (mm)		
				Comprimento Largo Length	Largura Ancho Width	Espessura Grosor Thickness
1	1/1	02	TRAVESSA INFERIOR   TRAVESAÑO INFERIOR   LOWER TRAY	1390	60	15
2	1/1	02	TRAVESSA LATERAL   TRAVESAÑO LATERAL   SIDE CROSSBEAM	305	60	15
3	1/1	04	PÉ   PIE   FOOT	205	80	25
4	1/1	01	BASE   BASE   BASE	1501	385	15
5	1/1	01	LATERAL ESQUERDA   LADO IZQUIERDO   LEFT SIDE	560	385	15
6	1/1	01	DIVISÃO ESQUERDA   DIVISIÓN IZQUIERDA   LEFT DIVISION	560	385	15
7	1/1	02	PRATELEIRA   ESTANTE   SHELF	360	385	15
8	1/1	01	DIVISÃO DIREITA   DIVISIÓN DERECHA   RIGHT DIVISION	560	385	15
9	1/1	01	LATERAL DIREITA   LADO DERECHO   RIGHT SIDE	560	385	15
10	1/1	01	PRATELEIRA DE VIDRO   ESTANTE DE VIDRIO   GLASS SHELF	714	300	4
11	1/1	01	TAMPO   CUBRIR   COVER	1505	430	15
12	1/1	02	FUNDO   FONDO   BACKGROUND	588	379	3
13	1/1	01	FUNDO MAIOR   FONDO MÁS GRANDE   BIGGER FUND	588	732	3
14	1/1	02	PORTA   PUERTA   DOOR	565	370	15
15	1/1	10	APLIQUE   APLICAR   APPLY	565	28	9
16	1/1	02	PORTA DE VIDRO   PUERTA DE VIDRIO   GLASS DOOR	714	300	4

# PASSO 1

ITM/S352-

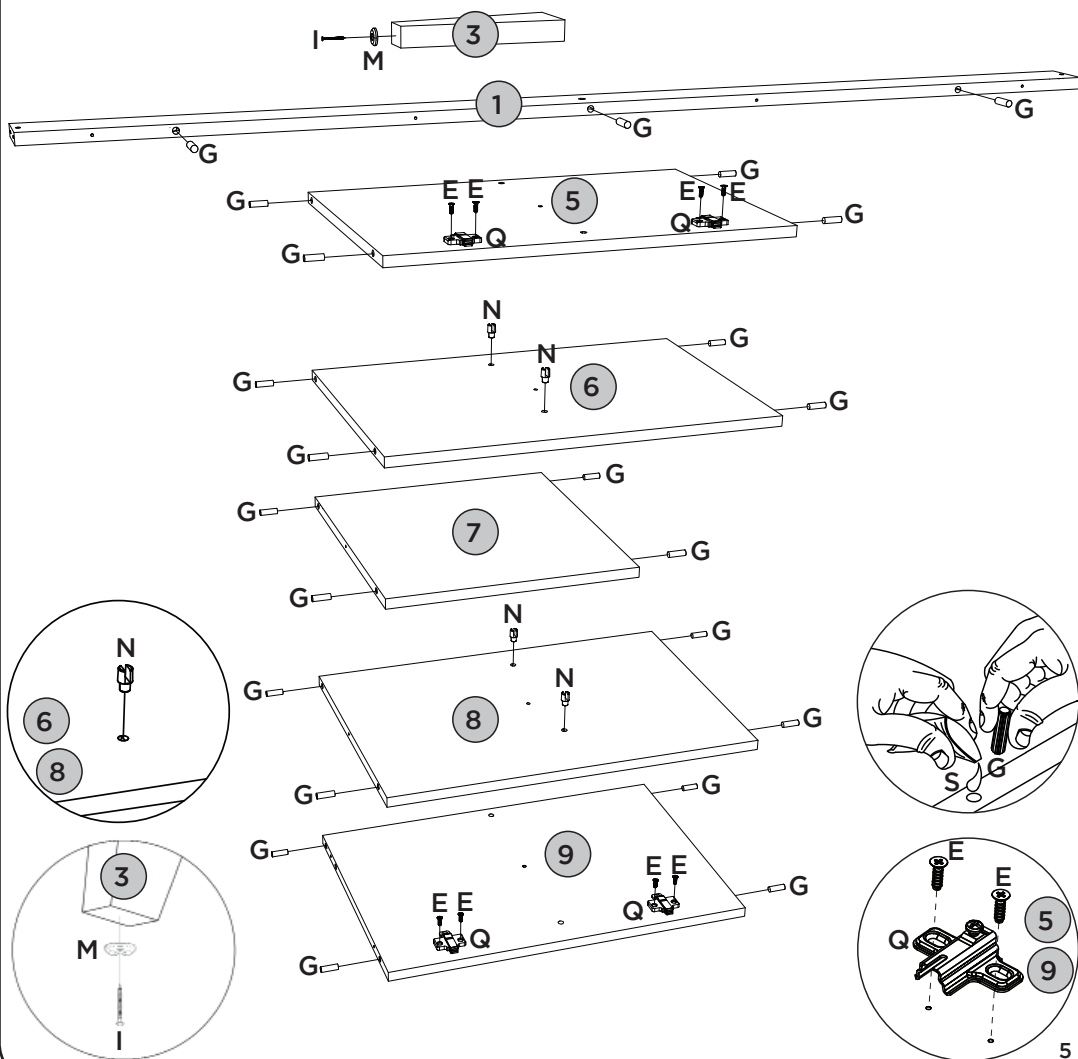
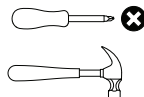
## PEÇAS REQUERIDAS

1	TRAVESSA INFERIOR	x2
3	PÉ	x4
5	LATERAL ESQUERDA	x1
6	DIVISÃO ESQUERDA	x1
7	PRATELEIRA	x2
8	DIVISÃO DIREITA	x1
9	LATERAL DIREITA	x1

## ACESSÓRIOS REQUERIDOS

E		08
G		30
I		04
M		04
N		04
Q		04
S		

## FERRAMENTAS NECESSÁRIAS







# PASSO 2

ITM/S352-

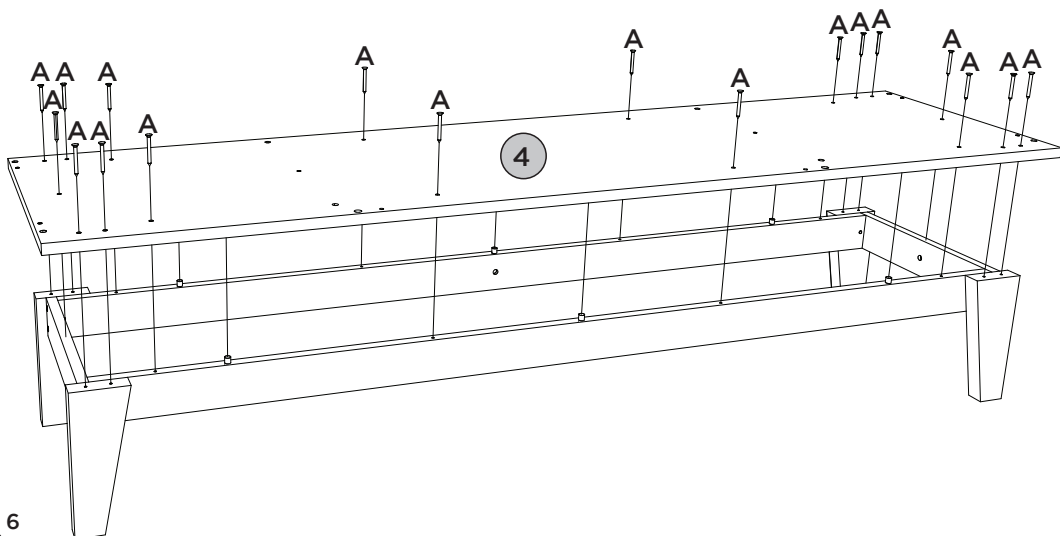
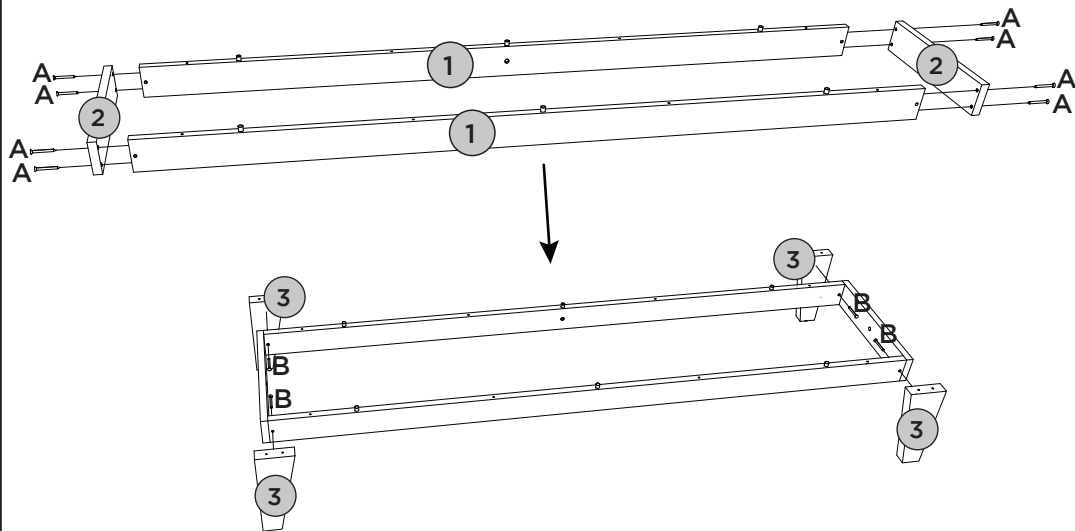
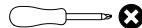
## PEÇAS REQUERIDAS

1	TRAVESSA INFERIOR	x2
2	TRAVESSA LATERAL	x2
3	PÉ	x4
4	BASE	x1

## ACESSÓRIOS REQUERIDOS

A			26
B			04

## FERRAMENTAS NECESSÁRIAS






# PASSO 3

ITM/S352-

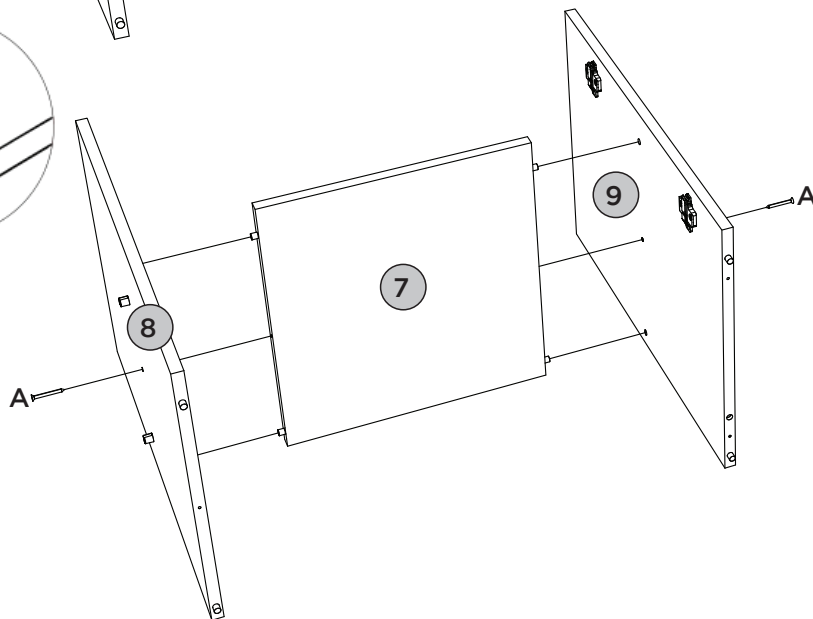
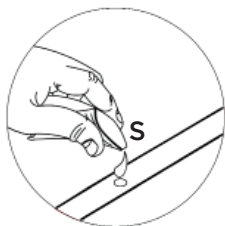
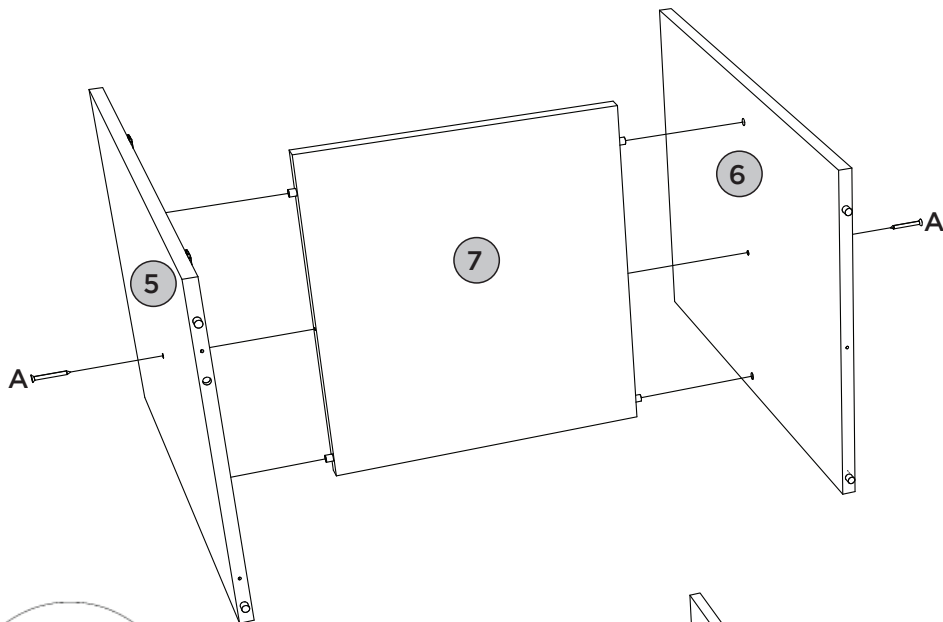
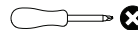
## PEÇAS REQUERIDAS

5	LATERAL ESQUERDA	x1
6	DIVISÃO ESQUERDA	x1
7	PRATELEIRA	x2
8	DIVISÃO DIREITA	x1
9	LATERAL DIREITA	x1

## ACESSÓRIOS REQUERIDOS

A			04
S			

## FERRAMENTAS NECESSÁRIAS






# PASSO 4

ITM/S352-

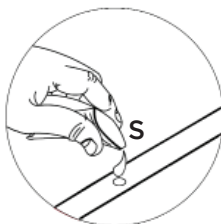
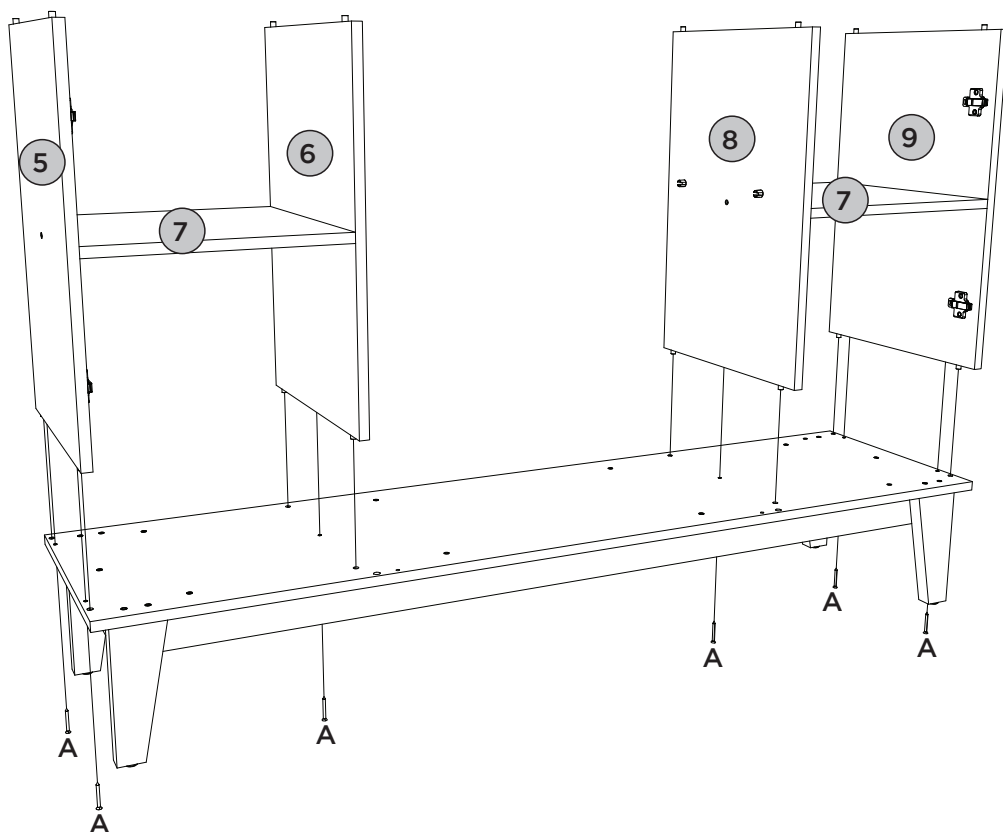
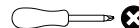
## PEÇAS REQUERIDAS

5	LATERAL ESQUERDA	x1
6	DIVISÃO ESQUERDA	x1
7	PRATELEIRA	x2
8	DIVISÃO DIREITA	x1
9	LATERAL DIREITA	x1

## ACESSÓRIOS REQUERIDOS

A			06
S			

## FERRAMENTAS NECESSÁRIAS





# PASSO 5

ITM/S352-

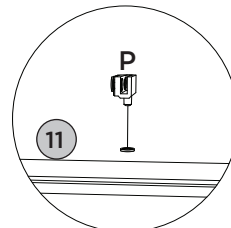
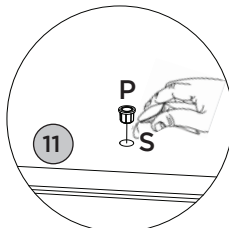
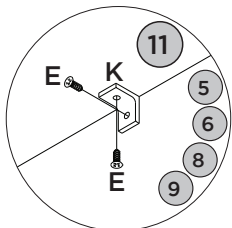
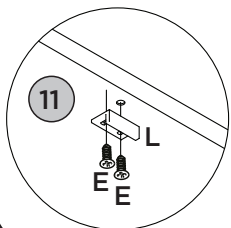
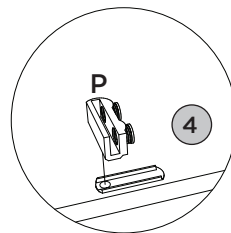
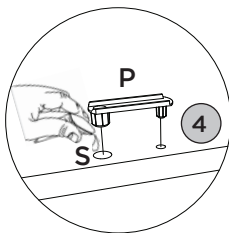
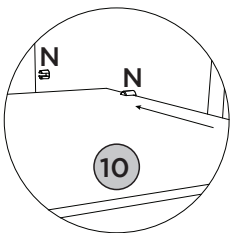
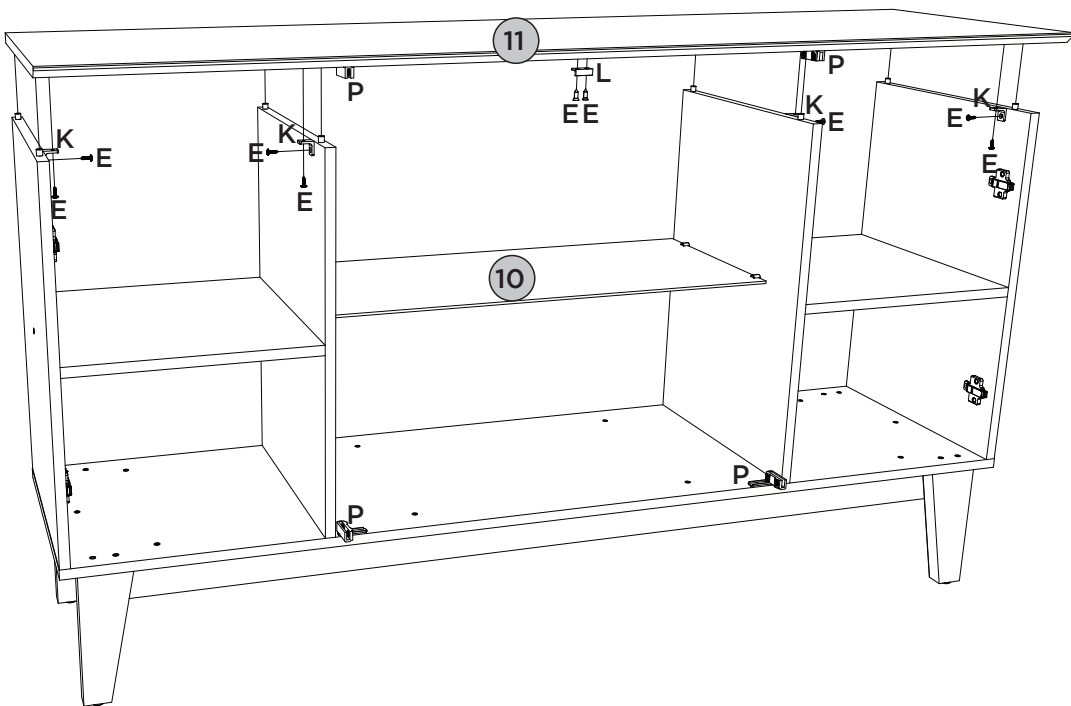
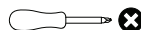
## PEÇAS REQUERIDAS

10	PRATELEIRA VIDRO	x1
11	TAMPO	x1

## ACESSÓRIOS REQUERIDOS

E		10
K		04
L		01
P		02
S		

## FERRAMENTAS NECESSÁRIAS





# PASSO 6

ITM/S352-

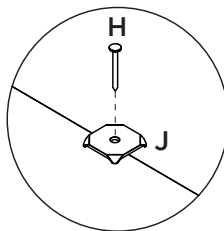
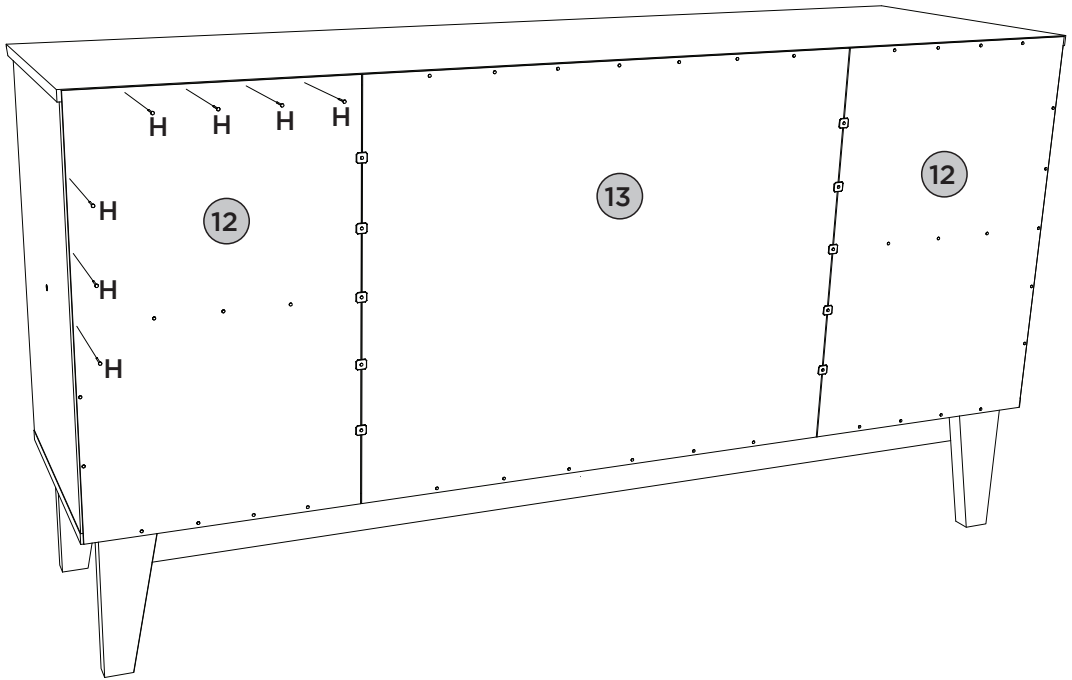
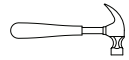
## PEÇAS REQUERIDAS

12	FUNDO	x2
13	FUNDO MAIOR	x1

## ACESSÓRIOS REQUERIDOS

H		60
J		10






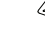
## FERRAMENTAS NECESSÁRIAS



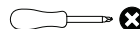
## PEÇAS REQUERIDAS

14	PORTA	x2
15	APLIQUE	x10
16	PORTA DE VIDRO	x2

## ACESSÓRIOS REQUERIDOS

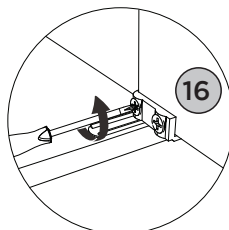
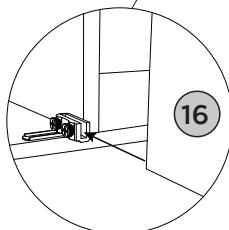
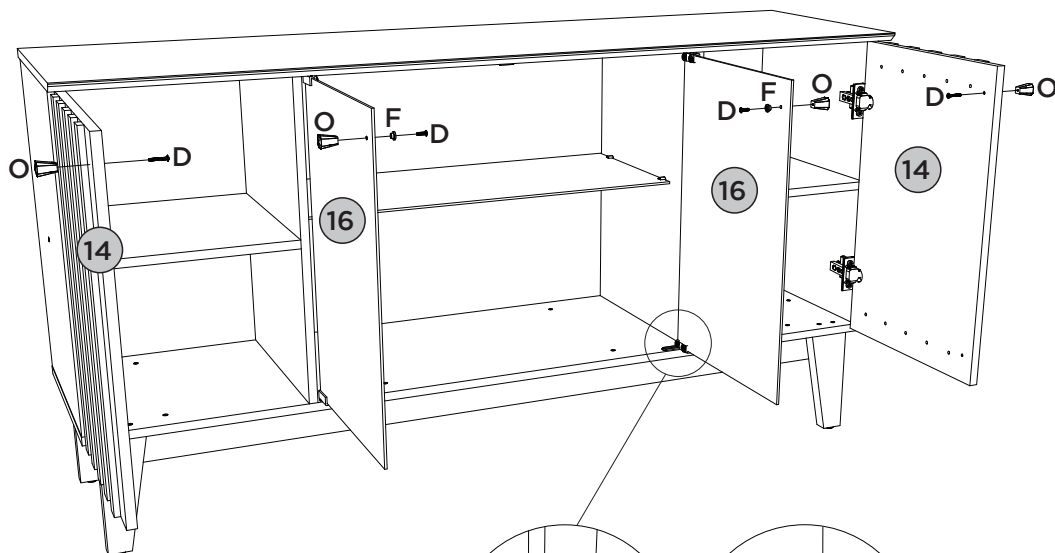
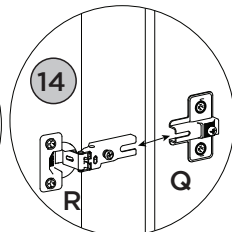
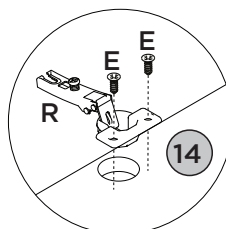
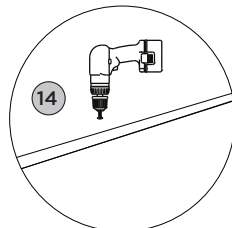
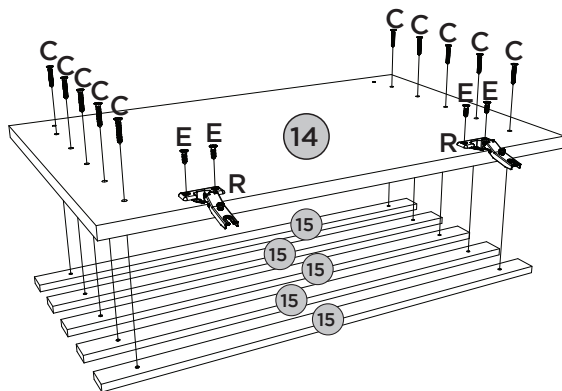
C		20
D		04
E		08
F		02
O		04
R		04

## FERRAMENTAS NECESSÁRIAS





Para porta (14): Defina para o modo de perfuração.

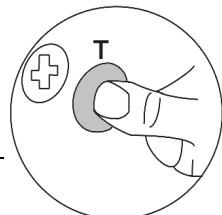
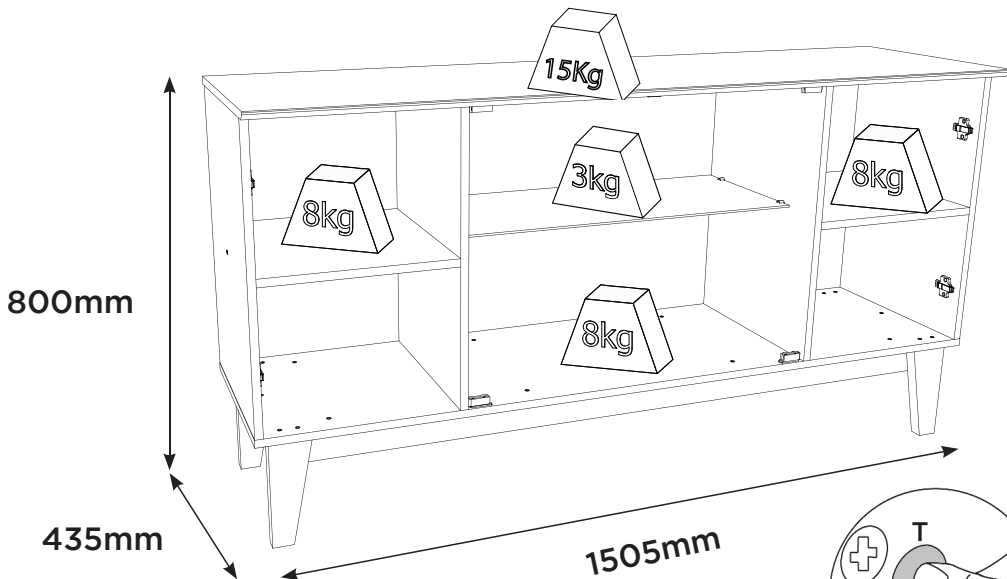
Faça a furação passante para fixar os puxadores (O).



Pesos máximos recomendados  
com carga distribuída.  
Peso máximo recomendado con  
la carga distribuida.  
Recommended maximum  
weights with evenly distributed.

ACESSÓRIOS REQUERIDOS

T		46
U		03
V	<b>HENN</b>	01



Produto Concluído  
Producto terminado  
Finished Product

