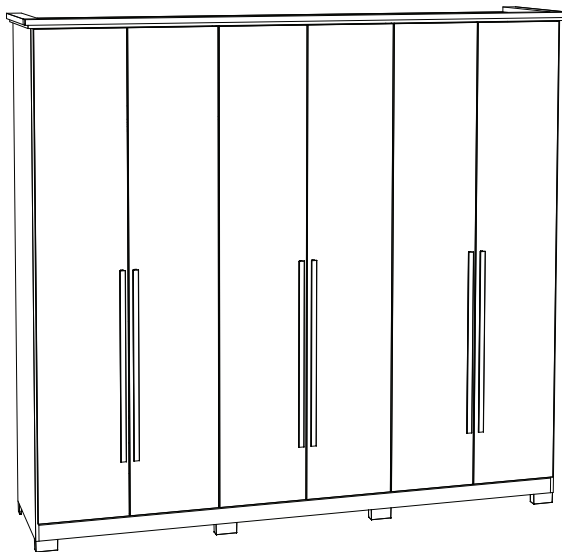
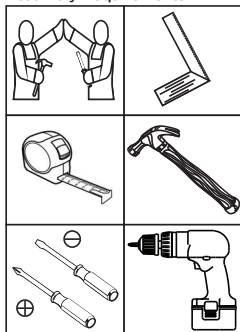


**HENN**Ind. e Com. de Móveis Henn  
Mondai - SC - Brasil

☎ +55 49 3674.3500

📷 @moveishenn  
www.henn.com.br**INSTRUÇÕES DE  
MONTAGEM**INSTRUCCIONES DE MONTAJE  
ASSEMBLY INSTRUCTIONS**Roupeiro Leblon 6 Portas 6 Gavetas | Armario Leblon 6 Puertas 6 Cajones |  
Wardrobe Leblon 6 Doors 6 Drawers****D327-127 Nature/OFF White  
D327-128 Nature****Requisitos para montagem  
Requisitos para la montaje  
Assembly Requirements**

Imagens meramente ilustrativas,  
não acompanha o produto.  
Imágenes ilustrativas, no incluidas  
con el producto.  
Illustrative images, not included  
with the product.

**AVISO**

Para limpeza de seu móvel, use uma franela seca ou umedecida, e não utilize produtos químicos que possam danificar seu produto.

**SISTEMA DE MONTAGEM**

O sistema de montagem dos produtos, funciona de acordo com a ordem crescente dos números indicados no desenho. Ex: 01, 02, 03, 04... até a conclusão da montagem.

**ASSISTÊNCIA TÉCNICA**

Para solicitação de Assistência Técnica você consumidor deverá entrar em contato com o Lojista a qual você realizou a compra deste produto e solicitar a assistência técnica das peças avariadas. A garantia abrange todas as peças, partes e componentes que eventualmente venham apresentar defeito de fabricação no prazo de 03 (três) meses, contando a partir da entrega do produto ao consumidor, mediante nota fiscal de compra. Se houver qualquer alteração na estrutura do produto ou ocorrer defeito por negligência do montador/consumidor em relação a instrução de montagem e manuseio, não será fornecido assistência técnica gratuita.

**ADVERTENCIA**

Para limpeza de su móvil, use una franela seca o húmeda, y no utilice productos químicos que puedan dañar su producto.

**SISTEMA DE MONTAJE**

El sistema de montaje de los productos funciona de acuerdo con el orden creciente de los números indicados en el dibujo. Ej.: 01, 02, 03, 04... hasta la conclusión del montaje.

**ASISTENCIA TÉCNICA**

Para solicitar Asistencia Técnica, el consumidor debe comunicarse con el Comercio que usted realizó la compra de este producto y solicita asistencia técnica para las partes dañadas. La garantía cubre todas las partes, piezas y componentes que eventualmente puedan presentar defecto de fabricación en el plazo de 03 (tres) meses, contados a partir de la entrega del producto al consumidor, mediante factura de compra. Si se produce algún cambio en la estructura del producto o se produce un defecto por negligencia del montador/consumidor en relación con las instrucciones de montaje y manipulación, no se prestará asistencia técnica gratuita.

**NOTICE**

To clean your furniture, use a dry or wet cloth, and do not use chemicals that may damage your product.

**ASSEMBLY SYSTEM**

The products' assembly system works according to the increasing order of the indicated numbers. For example: 01, 02, 03, 04 ... to the end of the assembly.

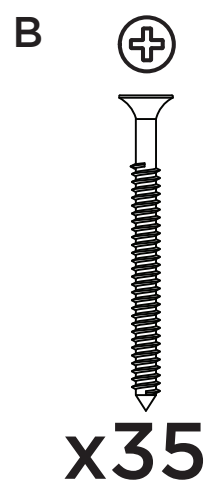
**TECHNICAL ASSISTANCE**

To request Technical Assistance, the consumer must contact the retailer from whom you purchased this product and request technical assistance for the damaged parts. The warranty covers all parts, parts and components that may eventually present a manufacturing defect within a period of 03 (three) months, counting from the delivery of the product to the consumer, by means of a purchase invoice. If there is any change in the structure of the product or defect occurs due to negligence of the assembler/consumer in relation to the assembly and handling instruction, free technical assistance will not be provided.

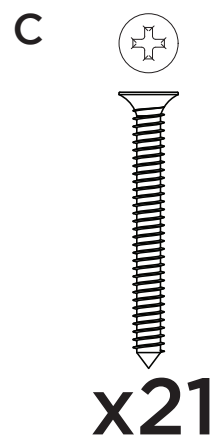
# ACESSÓRIOS | ACCESORIOS | ACCESSORIES



**x4**



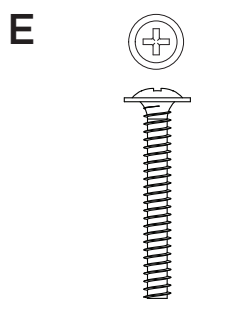
**x35**



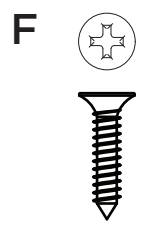
**x21**



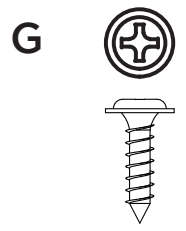
**x12**



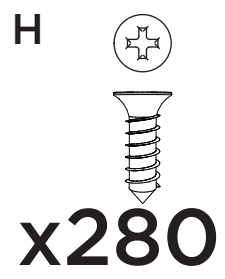
**x18**



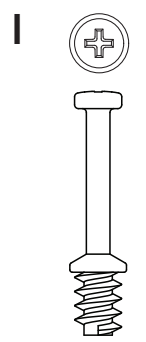
**x12**



**x12**



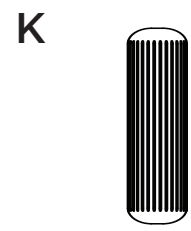
**x280**



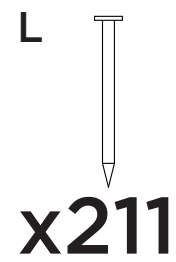
**x7**



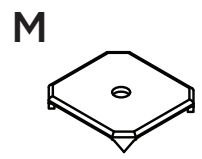
**x7**



**x108**



**x211**



**x58**

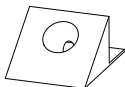
## ACESSÓRIOS | ACCESORIOS | ACCESSORIES

N



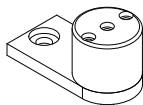
x4

O



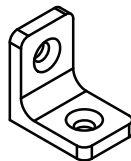
x12

P



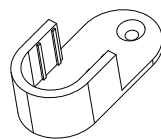
x12

Q



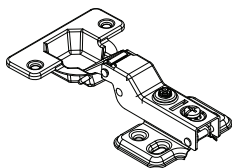
x18

R



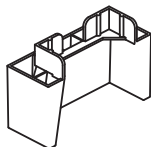
x8

S



x24

T



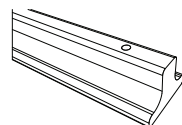
x8

U



x6 PAR

V



x6

W



x2

X



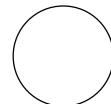
x2

Y



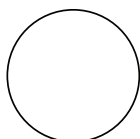
x3

Z



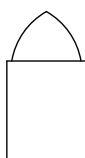
x46

AA



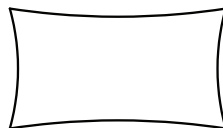
x8

AB



x2

AC



x3

AD

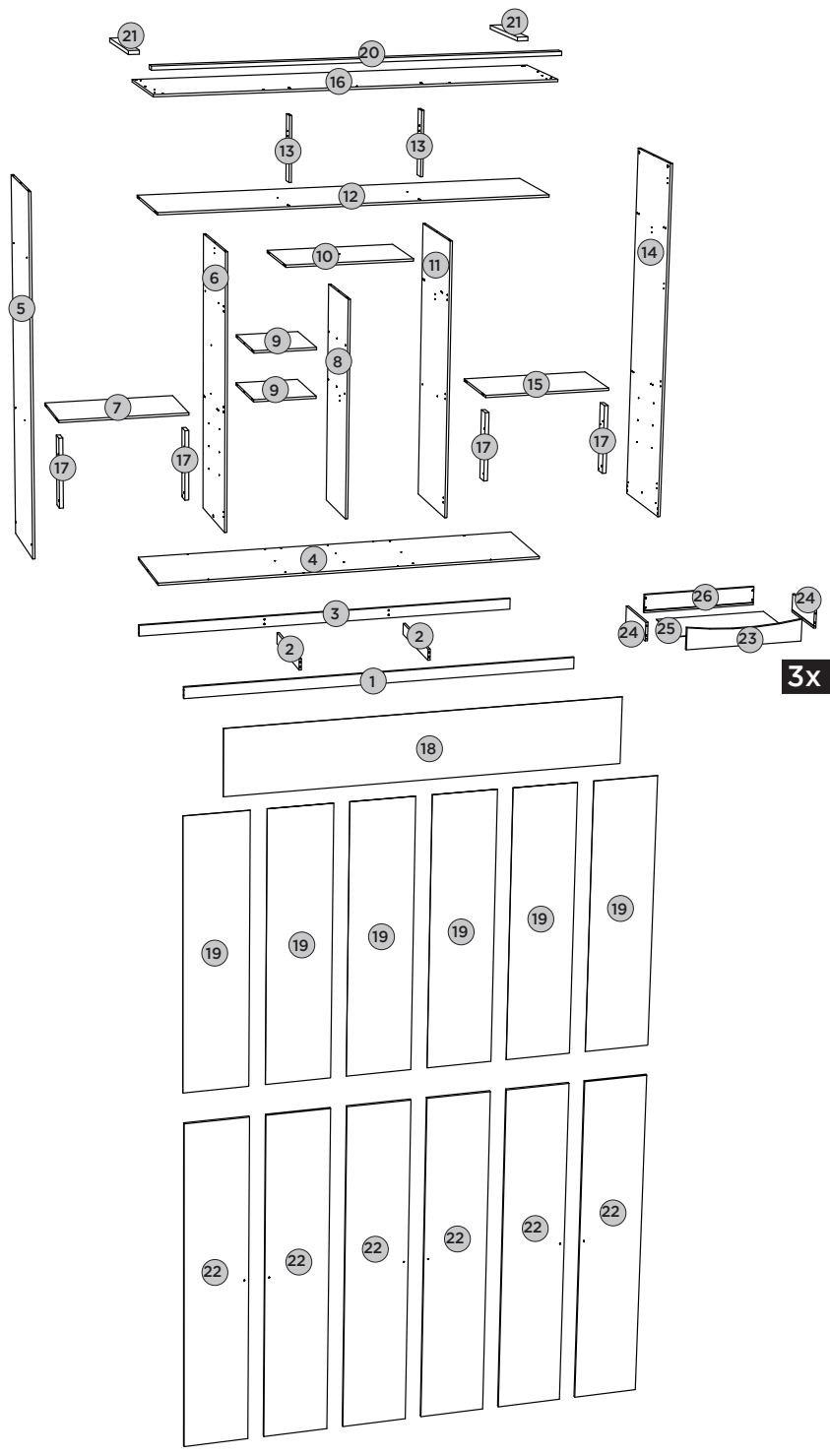
HENN

x1

# LISTA DE PEÇAS | LISTA DE PIEZAS | LIST OF PIECES

Item	Caixa Caja Box	Qtd Ctd Qty	Descrição Descripción Description	Dimensões (mm)   Dimensiones (mm)   Dimensions (mm)		
				Comprimento Largo Length	Largura Ancho Width	Espessura Grosor Thickness
1	2/4	01	RODAPÉ FRONTAL   FALDÓN DELANTERO   FRONT SKIRTING	2508	73	15
2	2/4	02	TRAVESSA DO RODAPÉ   PLACA DE RODAPIÉ   SKIRTING PLATE	542	73	15
3	2/4	01	RODAPÉ TRASEIRO   REPOSAPIÉS TRASERO   BACK FOOTBOARD	2508	73	15
4	2/4	01	BASE   BASE   BASE	2508	575	15
5	1/4	01	LATERAL ESQUERDA   LATERAL IZQUIERDA   LEFT SIDE	2310	575	15
6	3/4	01	DIVISÃO ESQUERDA   DIVISIÓN IZQUIERDA   LEFT	1793	575	15
7=15	1/4	01	TAMPO DAS GAVETAS   TAPA DE LOS CAJONES   TOP OF DRAWERS	826	450	15
8	3/4	01	DIVISÃO CENTRAL   DIVISIÓN CENTRAL   CENTRAL DIVISION	1428	452	15
9	2/4	02	PRATELEIRA MENOR   PEQUEÑO ESTANTE   SMALL SHELF	450	405	15
10	1/4	01	PRATELEIRA   ESTANTE   SHELF	826	455	15
11	3/4	01	DIVISÃO DIREITA   DIVISIÓN DERECHA   RIGHT DIVISION	1793	575	15
12	2/4	01	CHÃO DO MALEIRO   REPISA SUPERIOR   FLOOR OF MALEIRO	2508	575	15
13	2/4	02	RIPA DO MALEIRO   TRAVESAÑO SUPERIOR   MALEIRO'S LATH	414	73	15
14	1/4	01	LATERAL DIREITA   LADO DERECHO   RIGHT SIDE	2310	575	15
15=7	1/4	01	TAMPO DAS GAVETAS   TAPA DE LOS CAJONES   TOP OF DRAWERS	826	450	15
16	2/4	01	TAMPO SUPERIOR   TAPA SUPERIOR   TOP PANEL	2568	595	15
17	2/4	04	RIPA LATERAL   RIPA LATERAL   SIDE CLAPBOARD	450	80	25
18	2/4	01	FUNDO SUPERIOR   FONDO TOP   TOP FUND	2528	435	3
19	3/4	06	FUNDO   FONDO   BOTTOM	1813	418	3
20	2/4	01	MOLDURA FRONTAL SUPERIOR   MARCO FRONTAL SUPERIOR   UPPER FRONT FRAME	2598	60	25
21	2/4	02	MOLDURA LATERAL SUPERIOR   MARCO LATERAL SUPERIOR   TOP SIDE FRAME	550	70	25
22	4/4	06	PORTA   PUERTA   DOOR	2224	416	15
23	1/4	06	FRENTE DE GAVETA   FRENTE DE CAJÓN   DRAWER FRONT	768	145	15
24	1/4	12	LADO DE GAVETA   LADO DEL CAJÓN   SIDE OF DRAWER	350	122	15
25	1/4	06	FUNDO DE GAVETA RECORTADO   FONDO DEL CAJÓN RECORTADO   CROPPED DRAWER BOTTOM	732	361	3
26	1/4	06	RIPA DE TRÁS   MALLA DETRÁS   REAR LAHT	751	122	15

# LISTA DE PEÇAS | LISTA DE PIEZAS | LIST OF PIECES






# PASSO 1

ITM/D327-

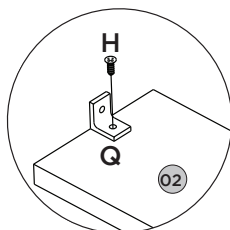
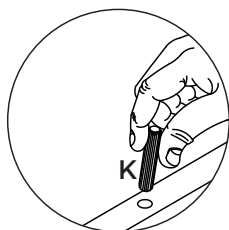
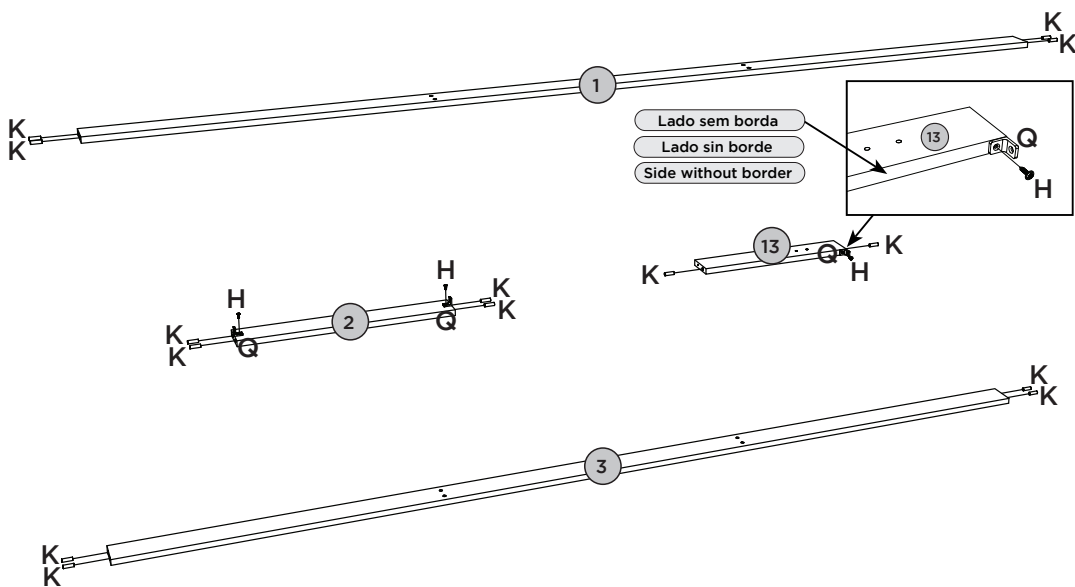
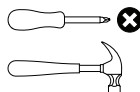
## PEÇAS REQUERIDAS

1	RODAPÉ FRONTAL	x1
2	TRAVESSA DO RODAPÉ	x2
3	RODAPÉ TRASEIRO	x1
13	RIPA DO MALEIRO	x2

## ACESSÓRIOS REQUERIDOS

H		06
K		20
Q		06

## FERRAMENTAS NECESSÁRIAS



# PASSO 2

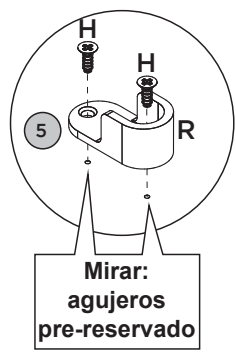
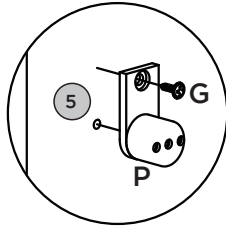
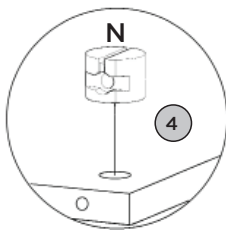
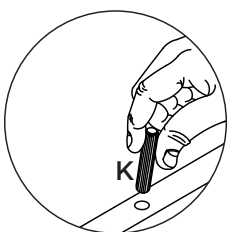
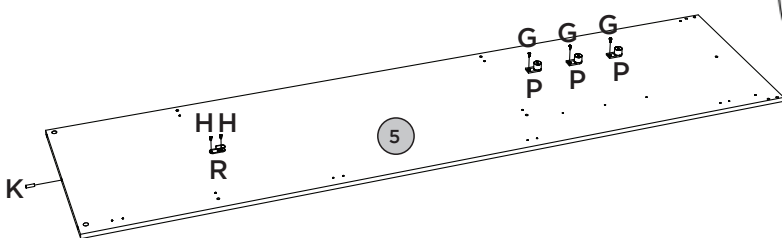
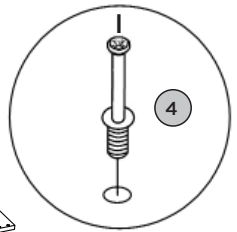
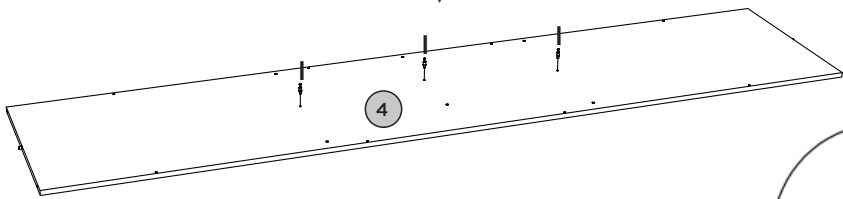
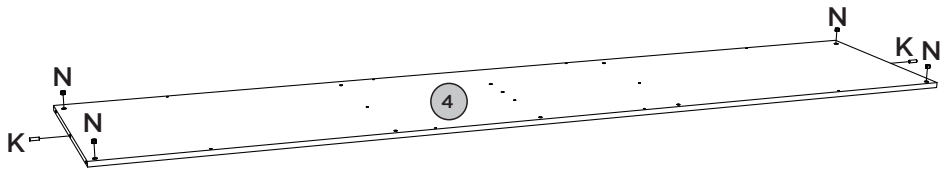
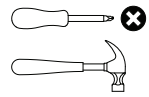
## PEÇAS REQUERIDAS

4	BASE	x1
5	LATERAL ESQUERDA	x1

## ACESSÓRIOS REQUERIDOS

G		03
H		02
I		03
K		03
N		04
P		03
R		01

## FERRAMENTAS NECESSÁRIAS








Mirar:  
agujeros  
pre-reservado

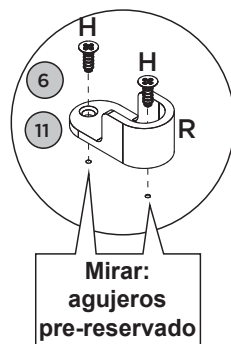
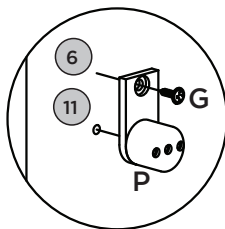
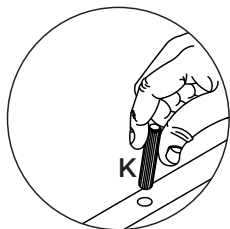
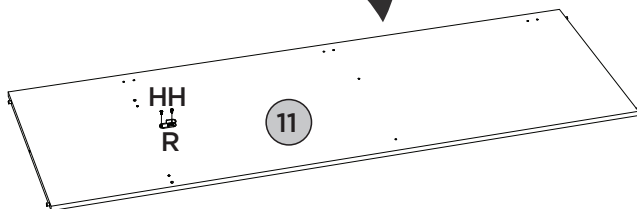
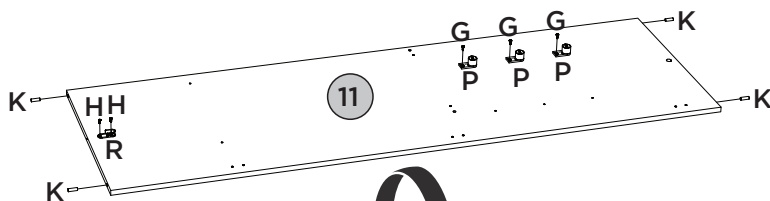
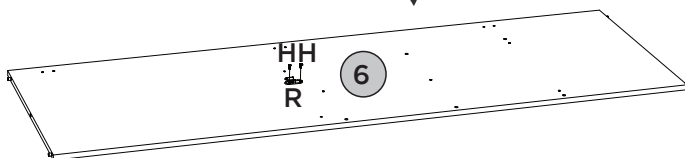
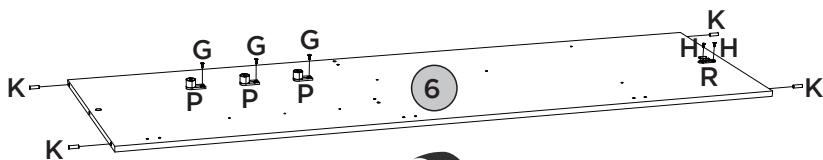
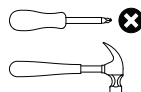
## PEÇAS REQUERIDAS

6	DIVISÃO ESQUERDA	x1
11	DIVISÃO DIREITA	x1

## ACESSÓRIOS REQUERIDOS

G		06
H		08
K		08
P		06
R		04

## FERRAMENTAS NECESSÁRIAS








# PASSO 4

ITM/D327-

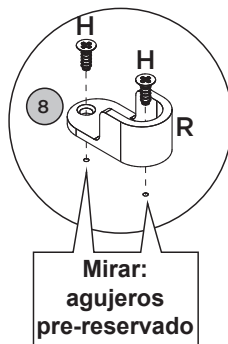
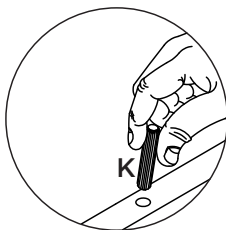
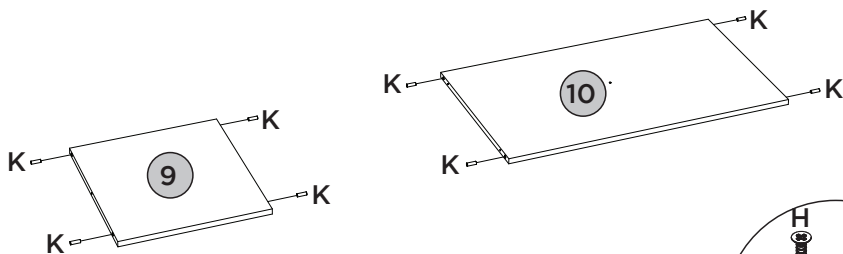
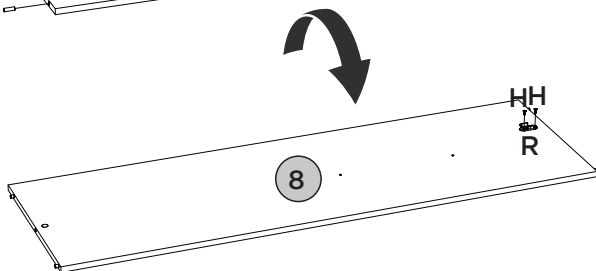
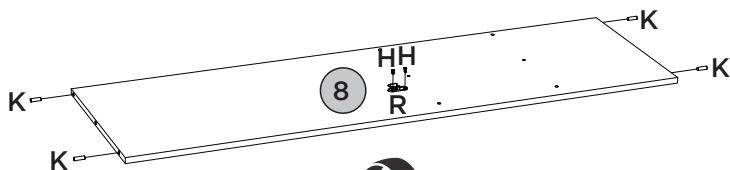
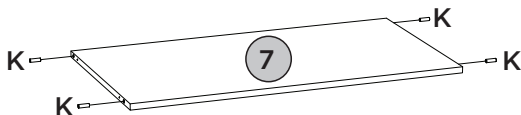
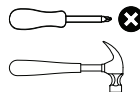
## PEÇAS REQUERIDAS

7=15	TAMPO DAS GAVETAS	x2
8	DIVISÃO CENTRAL	x1
9	PRATELEIRA MENOR	x2
10	PRATELEIRA	x1

## ACESSÓRIOS REQUERIDOS

H		04
K		24
R		02

## FERRAMENTAS NECESSÁRIAS





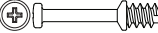



# PASSO 5

ITM/D327-

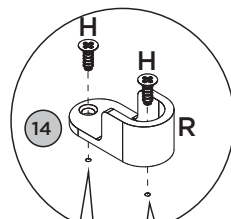
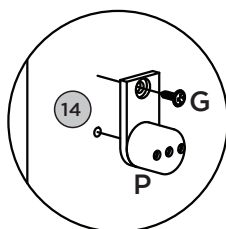
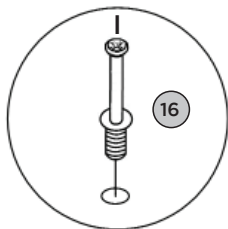
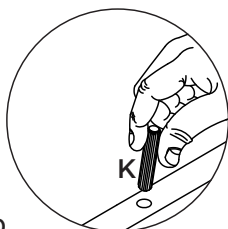
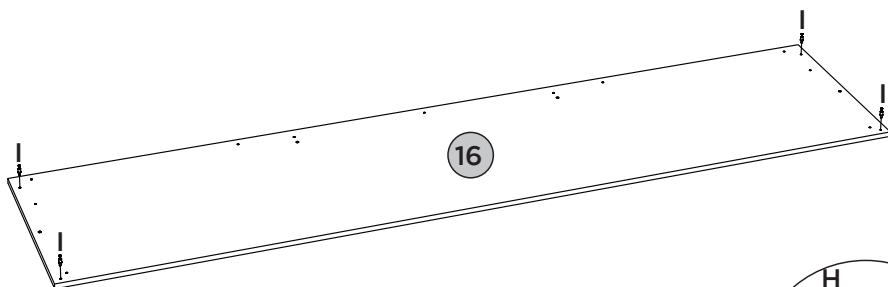
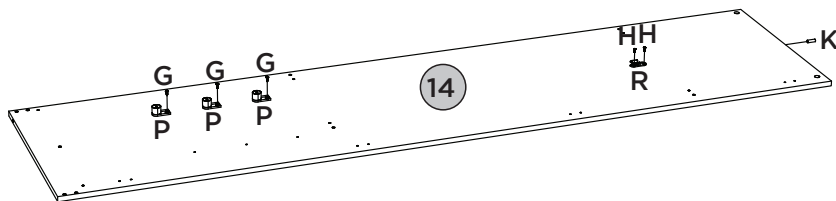
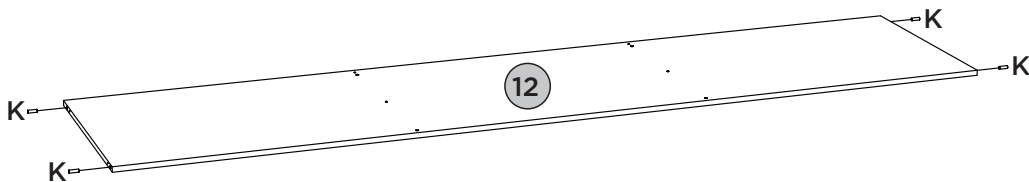
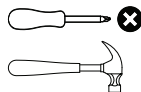
## PEÇAS REQUERIDAS

12	CHÃO DO MALEIRO	x1
14	LATERAL DIREITA	x1
16	TAMPO SUPERIOR	x1

## ACESSÓRIOS REQUERIDOS

G		03
H		02
I		04
K		05
P		03
R		01

## FERRAMENTAS NECESSÁRIAS



Mirar:  
agujeros  
pre-reservado

# PASSO 6

ITM/D327-

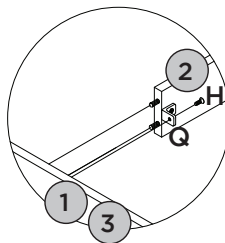
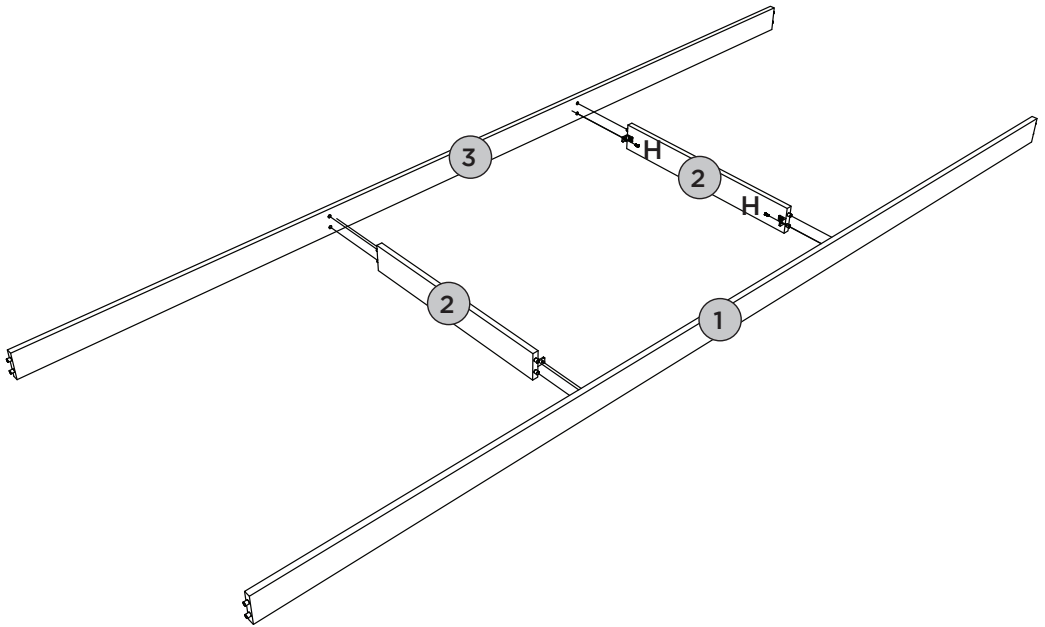
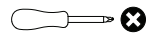
## PEÇAS REQUERIDAS

1	RODAPÉ FRONTAL	x1
2	TRAVESSA DO RODAPÉ	x2
3	RODAPÉ TRASEIRO	x1

## ACESSÓRIOS REQUERIDOS

H			04
---	---	---	----




## FERRAMENTAS NECESSÁRIAS



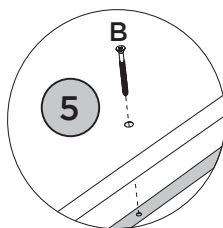
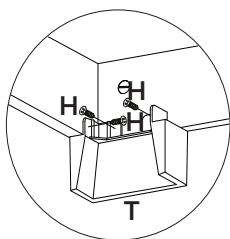
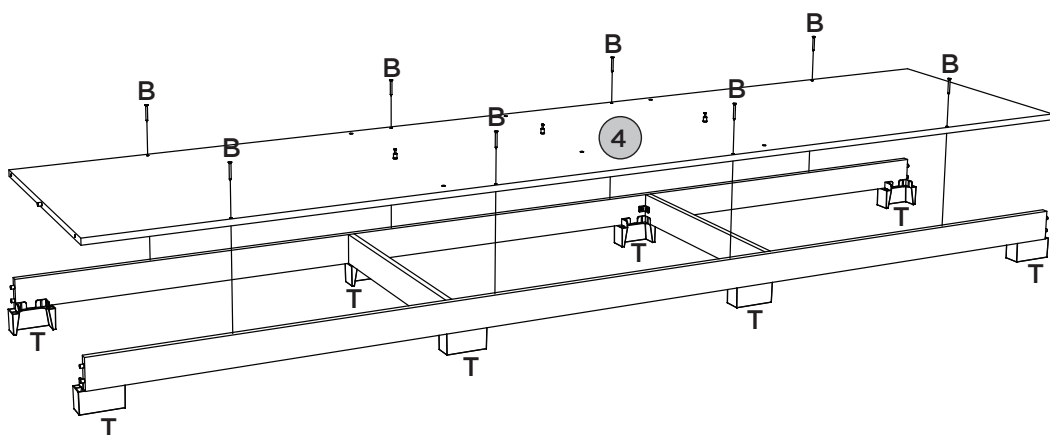
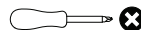
## PEÇAS REQUERIDAS

4	BASE	x1
---	------	----

## ACESSÓRIOS REQUERIDOS

B		08
H		24
T		08




## FERRAMENTAS NECESSÁRIAS

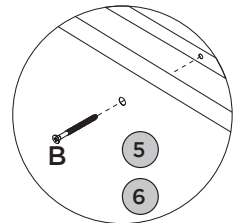
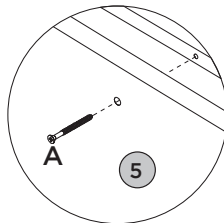
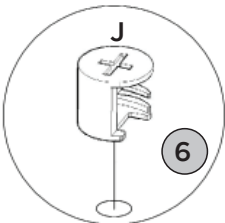
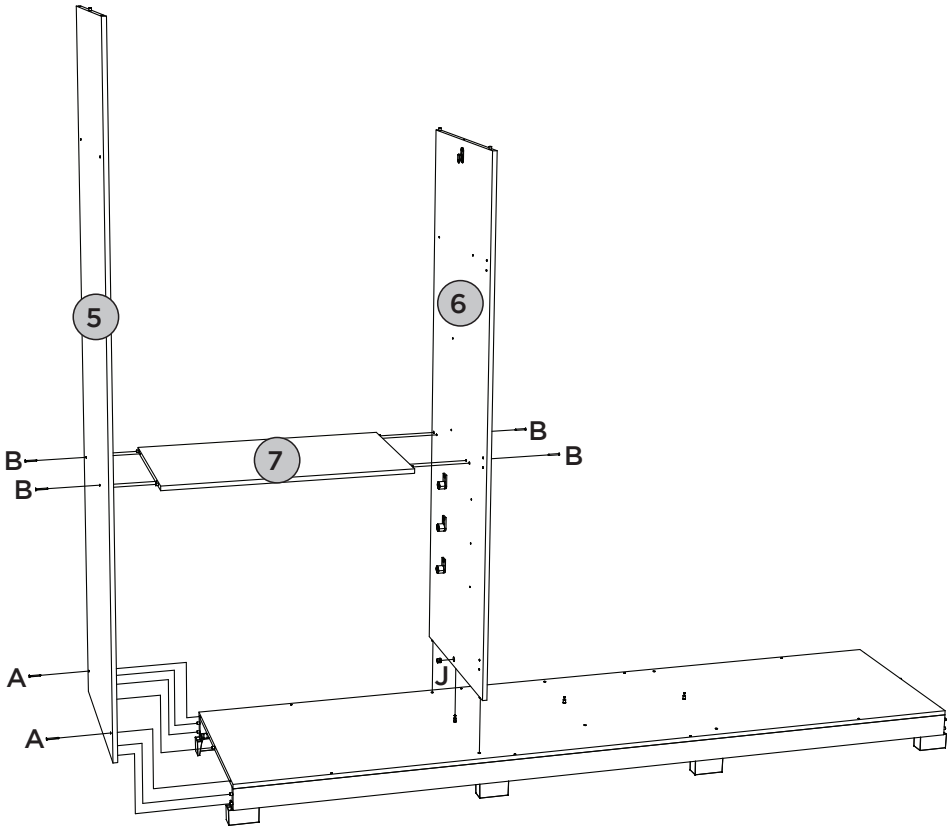
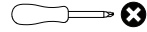


**PASSO 8****PEÇAS REQUERIDAS**

5	LATERAL ESQUERDA	x1
6	DIVISÃO ESQUERDA	x1
7	TAMPO DAS GAVETAS	x1

**ACESSÓRIOS REQUERIDOS**



A		02
B		04
J		01

**FERRAMENTAS NECESSÁRIAS**

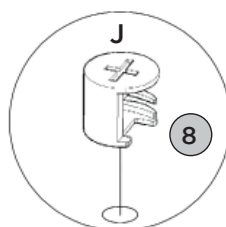
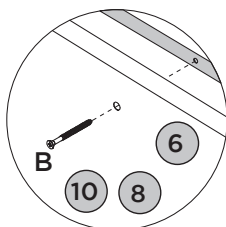
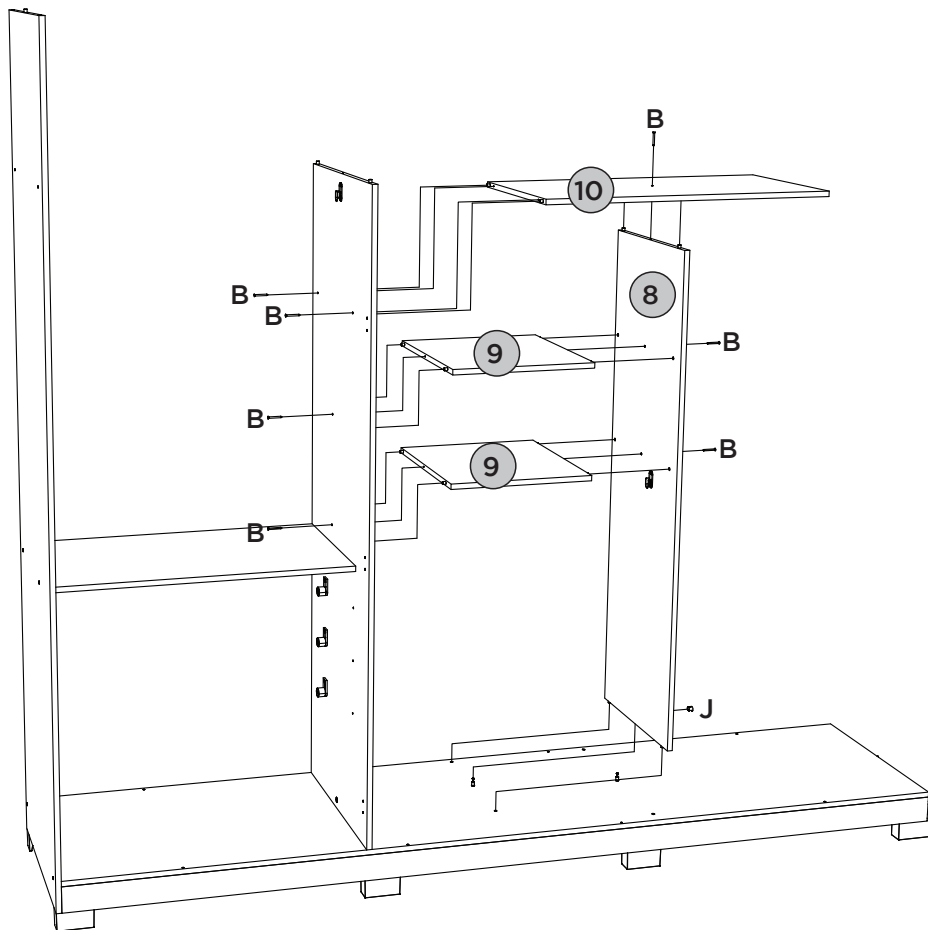
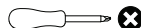
## PEÇAS REQUERIDAS

8	DIVISÃO CENTRAL	x1
9	PRATELEIRA MENOR	x2
10	PRATELEIRA	x1

## ACESSÓRIOS REQUERIDOS

B		07
J		01



## FERRAMENTAS NECESSÁRIAS

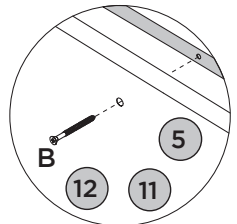
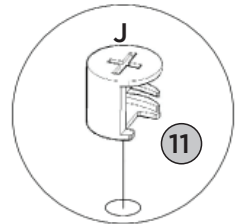
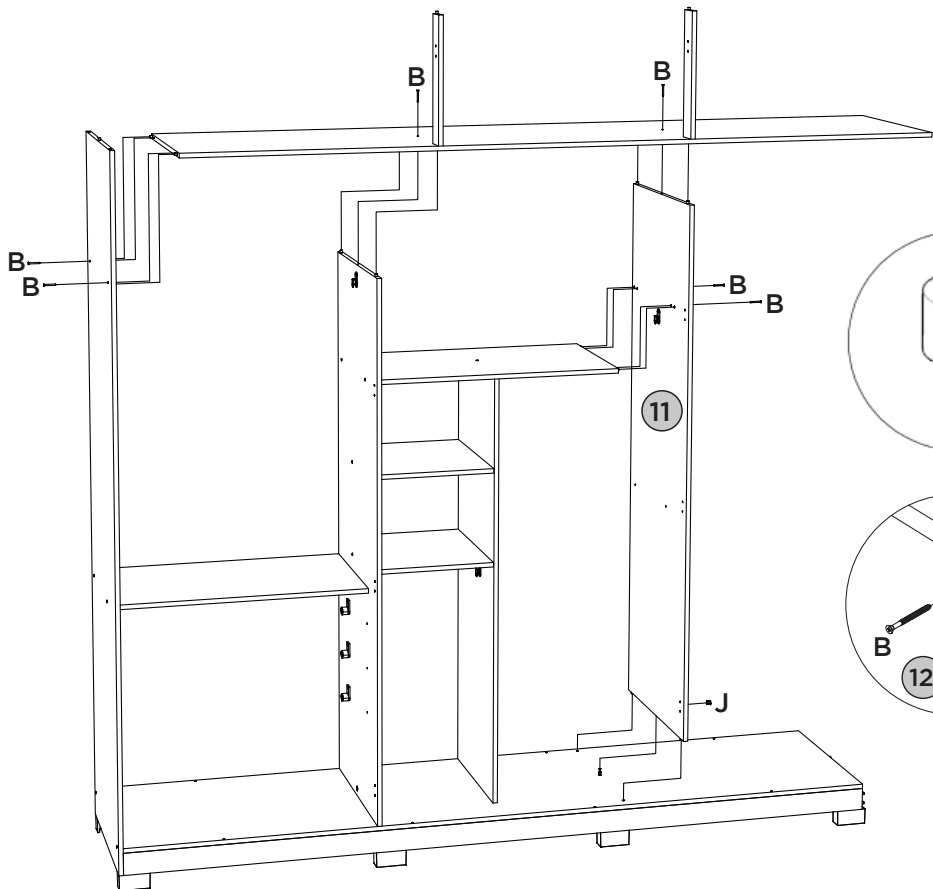
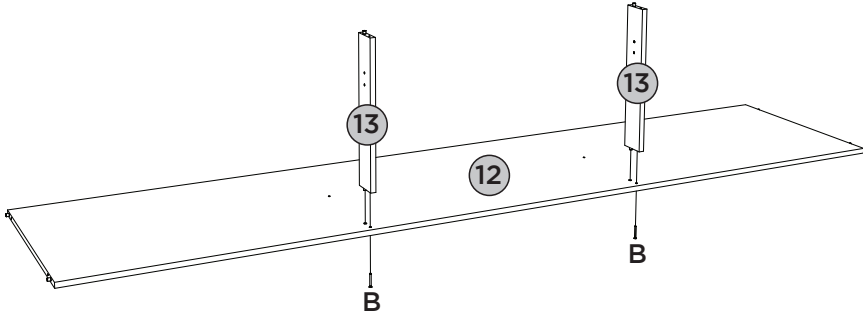
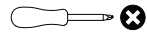


**PASSO 10****PEÇAS REQUERIDAS**

11	DIVISÃO DIREITA	x1
12	CHÃO DO MALEIRO	x1
13	RIPA DO MALEIRO	x2

**ACESSÓRIOS REQUERIDOS**

B		08
J		01

**FERRAMENTAS NECESSÁRIAS**






# PASSO 11

ITM/D327-

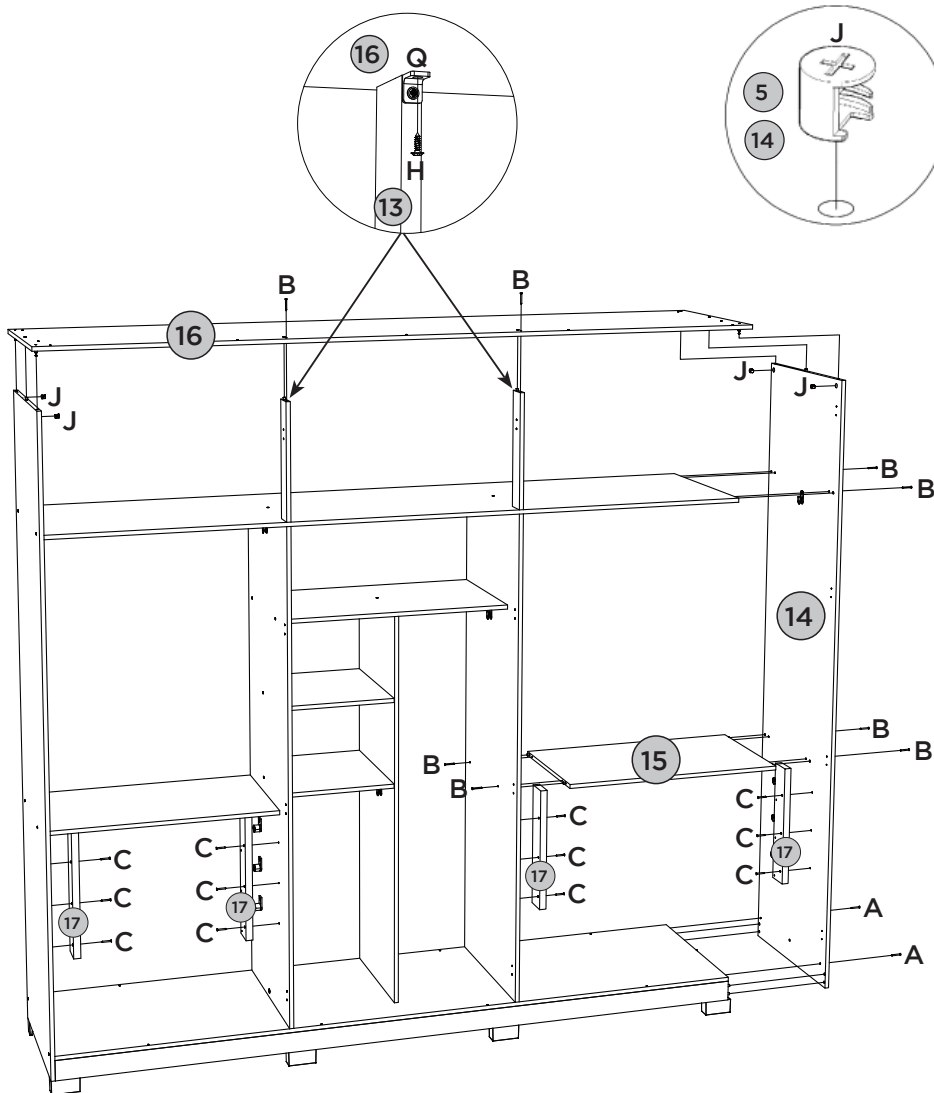
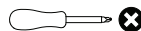
## PEÇAS REQUERIDAS

14	LATERAL DIREITA	x1
15=7	TAMPO DAS GAVETAS	x1
16	TAMPO SUPERIOR	x1
17	RIPA LATERAL	x4

## ACESSÓRIOS REQUERIDOS

A		02
B		08
C		12
H		02
J		04

## FERRAMENTAS NECESSÁRIAS

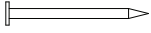
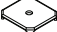





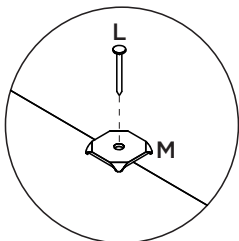
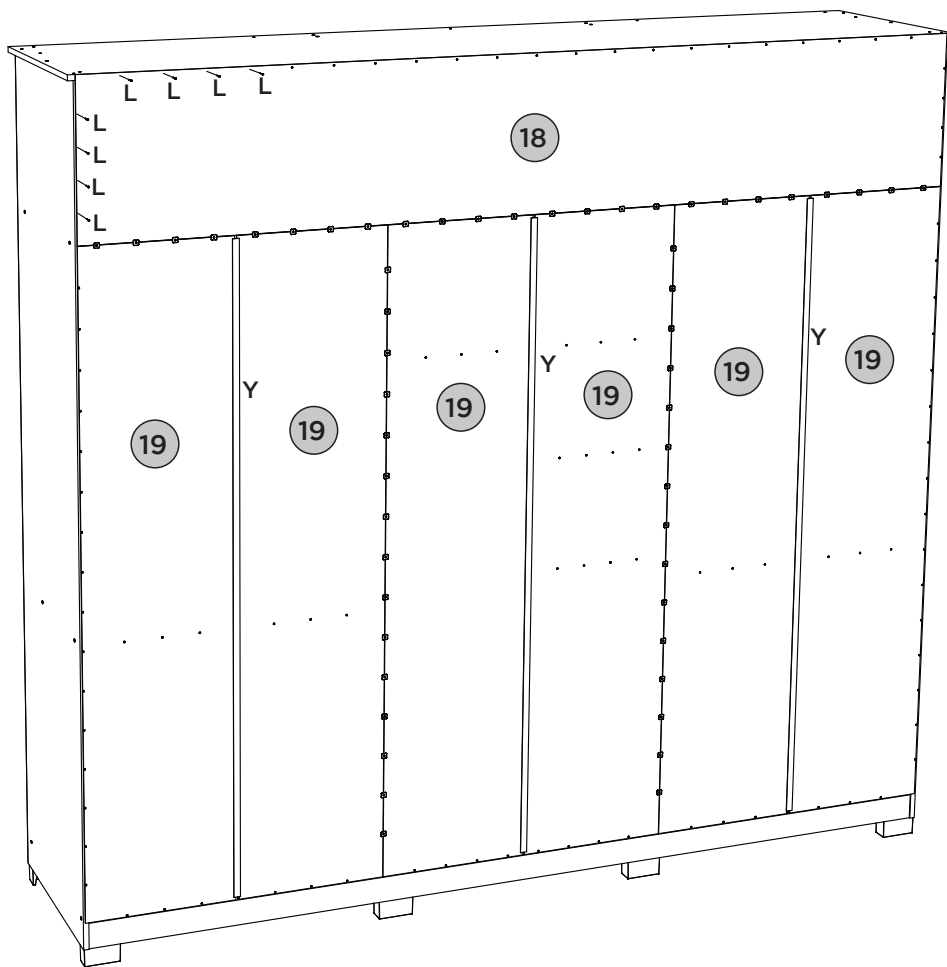
## PEÇAS REQUERIDAS

18	FUNDO SUPERIOR	x1
19	FUNDO	x6

## ACESSÓRIOS REQUERIDOS

L		211
M		58
Y		03

## FERRAMENTAS NECESSÁRIAS



Fixar os pregos a uma distância de 100mm de um para outro.

Fijar las uñas a un distancia de 100mm uno a otro.

Fix the nails at a distance of 100mm from one to the other


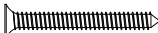

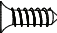



# PASSO 13

ITM/D327-

## PEÇAS REQUERIDAS

20	MOLDURA FRONTAL SUPERIOR	x1
21	MOLDURA LATERAL SUPERIOR	x2

## ACESSÓRIOS REQUERIDOS

C			09
H			24
U			06
W			02
X			02

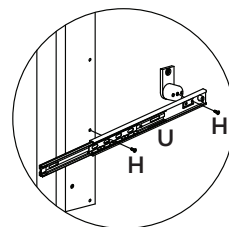
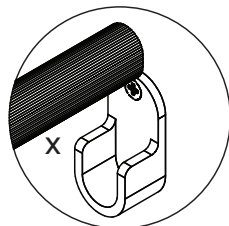
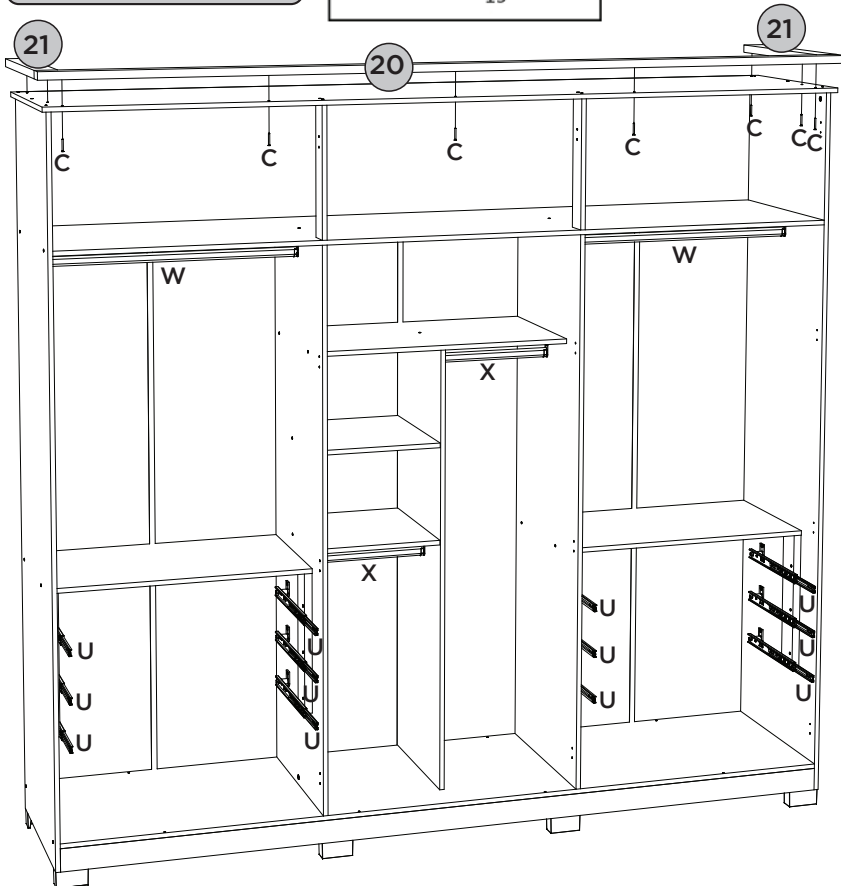
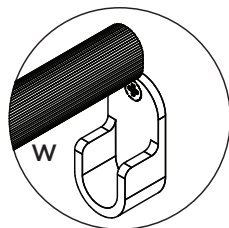
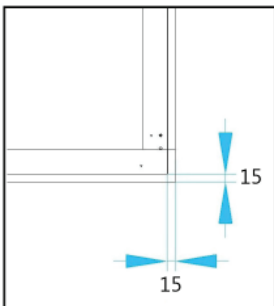
## FERRAMENTAS NECESSÁRIAS



Vista superior para fixação da Moldura Frontal Superior (20)

Vista superior para colocar el marco frontal superior (20)



Top view for attaching the Upper Front Frame (20)

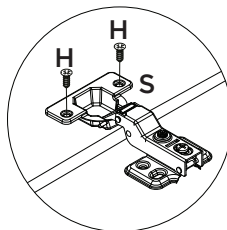
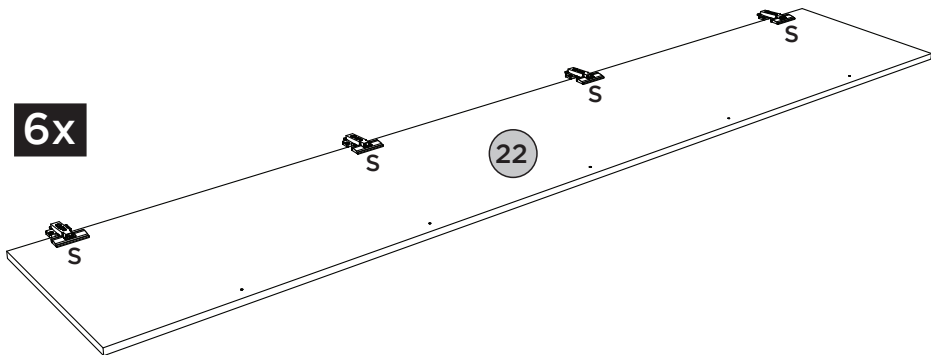
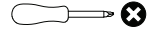


**PASSO 14****PEÇAS REQUERIDAS**

22	PORTA	x6
----	-------	----

**ACESSÓRIOS REQUERIDOS**






H		48
S		24

**FERRAMENTAS NECESSÁRIAS**

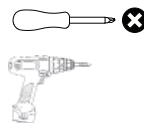
## PEÇAS REQUERIDAS

22	PORTA	x6
----	-------	----

## ACESSÓRIOS REQUERIDOS

E			18
H			96
V			06

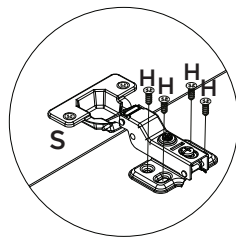
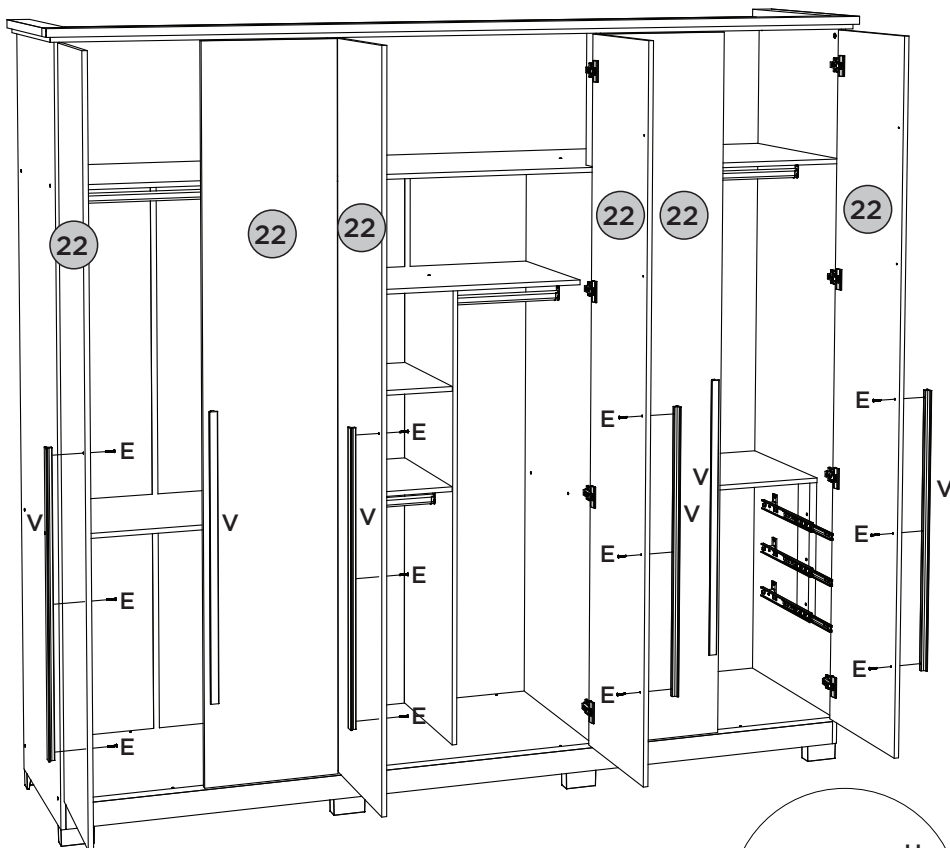
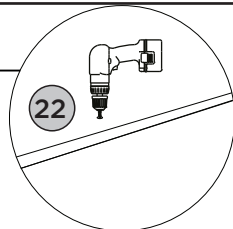
## FERRAMENTAS NECESSÁRIAS



Para porta (22): fazer furação passante para puxador (V)

Para la puerta (22): hacer agujeros pasantes para la manija (V)



For door (22): make through holes for handle (V)

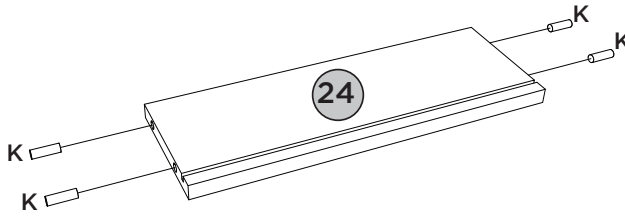
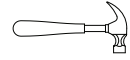


**PASSO 16****PEÇAS REQUERIDAS**

24	LADO DE GAVETA	x12
----	----------------	-----




**ACESSÓRIOS REQUERIDOS**

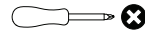
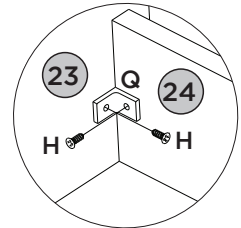
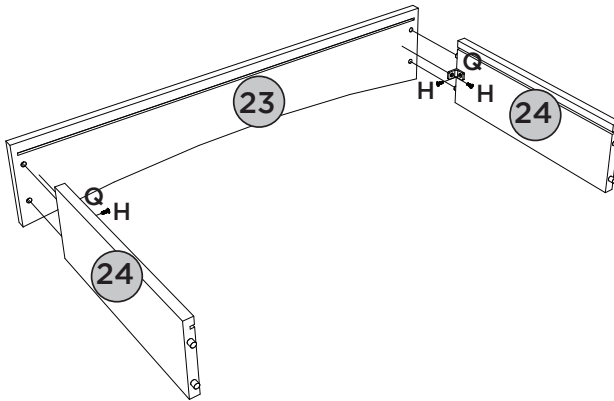
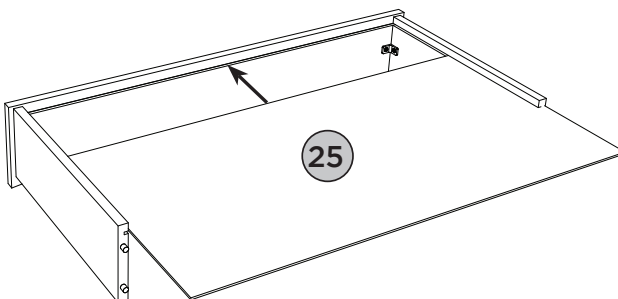
K		48
AC		

**FERRAMENTAS NECESSÁRIAS****PASSO 17****PEÇAS REQUERIDAS**

23	FRENTE DE GAVETA	x6
24	LADO DE GAVETA	x12
25	FUNDO DE GAVETA RECORTADO	x6

**ACESSÓRIOS REQUERIDOS**

H		24
Q		12
AC		




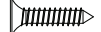

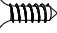



**FERRAMENTAS NECESSÁRIAS****6x****1º****6x****2º**

# PASSO 18

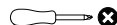
## PEÇAS REQUERIDAS

26	RIPA DE TRÁS	x6
----	--------------	----

## ACESSÓRIOS REQUERIDOS

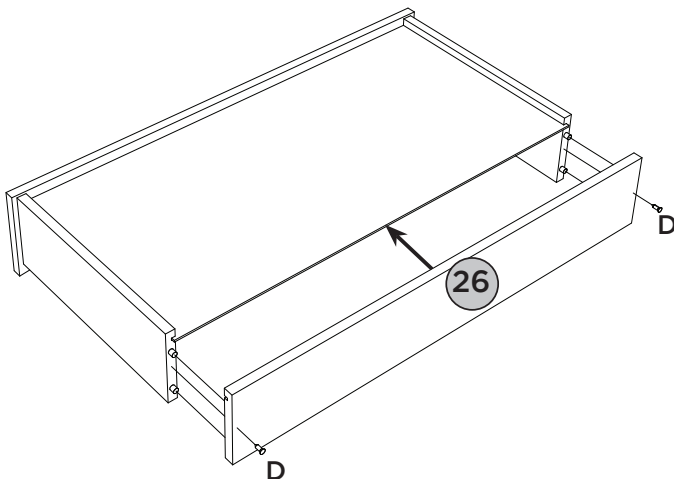
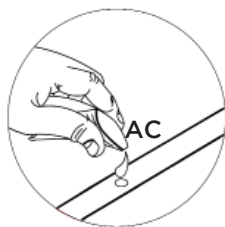
D			12
F			12
H			36
O			12
U			06
AC			

## FERRAMENTAS NECESSÁRIAS



6x

3º



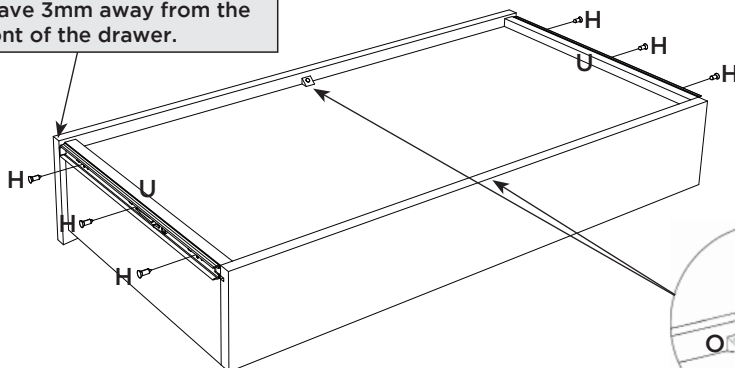
6x

4º

Deixar 3mm de distância da frente de gaveta.



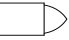
Deje una separación de 3mm del frente del cajón.

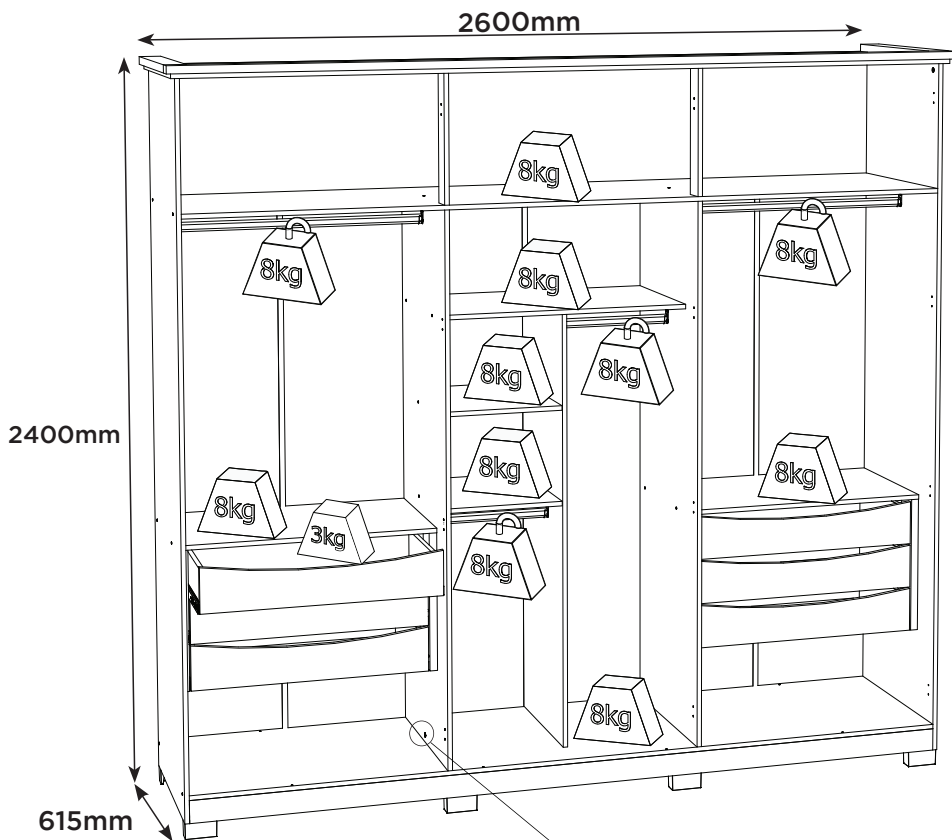
Leave 3mm away from the front of the drawer.



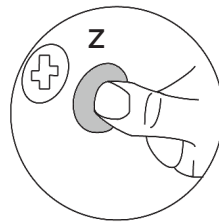
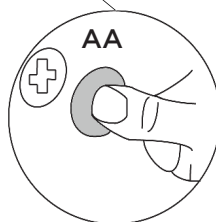
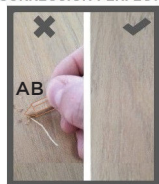
# PASSO 19

## ACESSÓRIOS REQUERIDOS

Z		46
AA		08
AB		02
AD	<b>HENN</b>	01



PERFECT CORRECTION  
CORRECCIÓN PERFECTA



Pesos máximos recomendados com carga distribuída  
 Peso máximo recomendado con la carga distribuída  
 Recommended maximum weight with distributed load.

**Produto Concluído**  
**Producto terminado**  
**Finished Product**

